

The ILS14 Lectern - User Set up guide.



Table of contents

Product Overview	1
Parts Overview	1
Components	2
Specifications	3
Controller main, Notebook interface, Control panel	6
Controller back panel	7
Controller connection	8
Controller connection layout	9
Electric Light control, Relay default positions	10
Motorized screen and Operating relays	11
Operation instructions	12
Trouble shooting	15

Congratulations with your ILS14 product.

1. Product overview

To hold a computer & internet based lecture in a classroom, devices such as a PC, amplifier, microphone, and a speaker system are required. You also need to be able to adjust fairly complex device settings to suit your needs, and the equipment needs a safe storage place where it can be kept in good order when it's not in use. These needs resulted in developing the all-in-one multimedia podium. It is easy to move and has a built-in controller to control each device with one touch, while a multimedia desktop PC can be put inside the compact design cabinet. The highly sensitive LCD Touch screen monitor enables you to deliver impressive lectures, navigating through your presentation can be done with a single touch. It is also possible to save the lecture contents in a moving picture file which can be used for distance learning. With all these advantages, the Intelligent Power Lectern becomes a state-of-the-art multimedia E-Learning Solution.

2. Parts overview

Smart Podium



3. Components

Lectern	
2ch 700Mhz Wireless Microphone	1
5 Input (3ch mic. 2ch AUX) 1 Output Stereo AMP	1
Notebook interface module	1
LCD Monitor	1
Gooseneck Microphone	1
Controller - 7" LCD Type	1
Speaker (4 Ohm 20 W)	2
Combo (option)	1

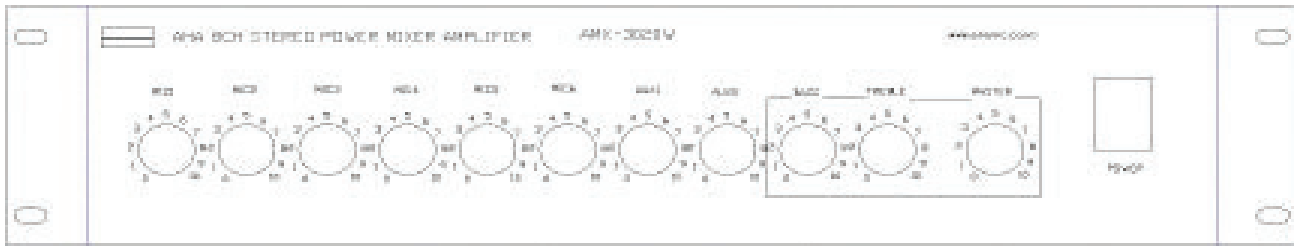
Cable & Others	
RGB Cable 1.5m	3
USB Cable 1.5m	4
Mini-stereo Cable 1.5m	4
RCA AV Cable (3:3) 1.5m	1
RCA Audio Cable (2:2) 1.5m	1
LAN Cable 1.5m	2
Power Code 1.5m	5
RS -232 Cable 1.5m	1
Power Code 1.5m	5
Adepter 5V 1A	1
Adepter 19V 3.4A	2
Tablet Pen	1
User Manual	1
Driver & Software CD	1

4. Specifications

Controller Specifications		AMC - 6000L
VGA	VGA Input	VGA x 3
	VGA Output	VGA x 2
	Signal Type	VGA, SVGA, XGA, QXGA
	Max. Resolution	2048 x 1536
	Pixel Frequency	440 Mhz
Sound	Audio Input	Audio x 5
	Audio Output	Audio x 1
	Frequency Response	20 Hz ~ 20 KHz + 1 / -3 dB
Video	Video Input	Video x 2
	Video Output	Video x 2
	Bandwidth	100 MHz
	Return loss	-30 dB; 5MHz
Control	Projector Power Control Port	x 1
	Screen Control Port	x 1
	Serial RS-232 Port	x 1
Other	Power	220 ± 10% 50/60 Hz 5A
	Weight	1 kg
	Size	420 x 84 x 250 mm

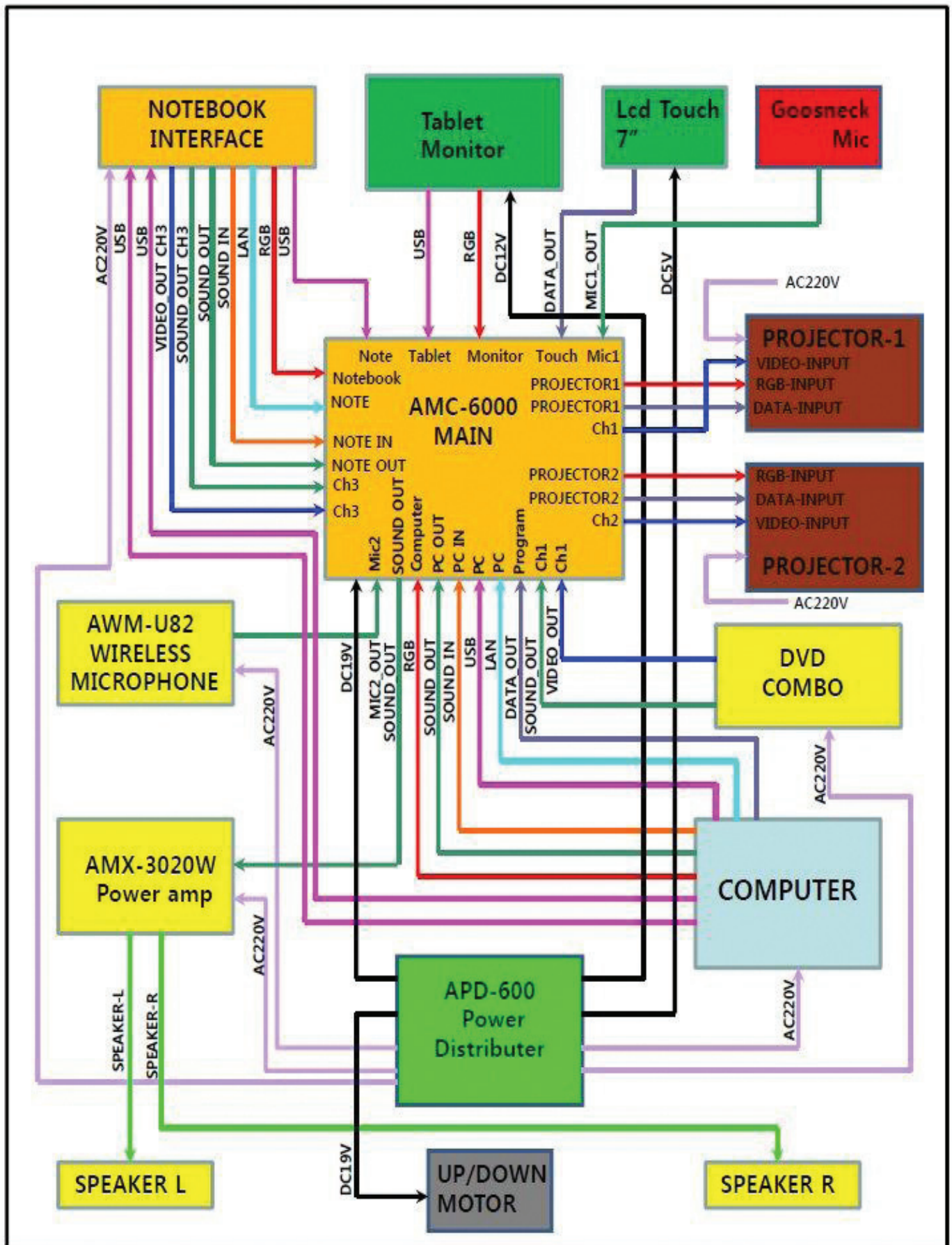
Amplifier Specification

AMX - 3020W



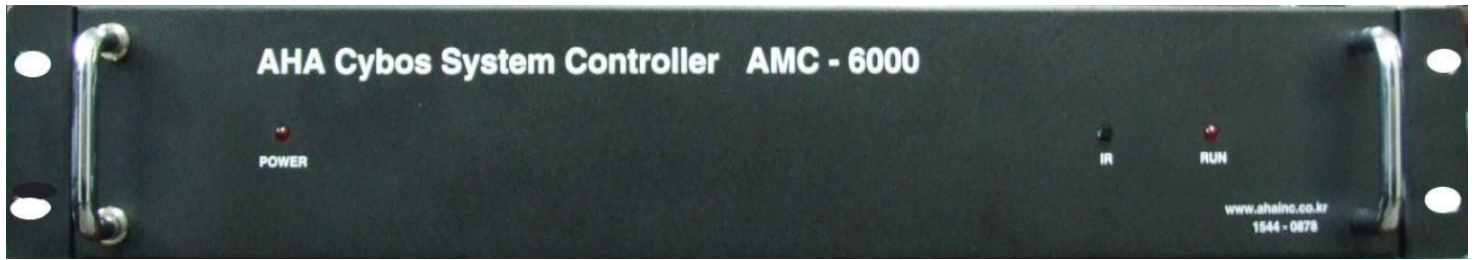
Maximum power (1KHz : THD < 1%) 4ohm	200W+200W
Total Harmonic distortion	<0.05%
Intermodulation distortion	<0.08%
Cross talk (at 1KHz)	< -80dB
Microphone Input Sensitivity 1-6CH	0.8mV at 600 Ohm
Signal to Noise ratio Mic 1-6	Better than 60dB
Auxiliary Input Sensitivity 1-2	100mV at 47k Ohm 700mV
Tone control range	Bass +or -10dB at 100Hz Treble +or -10dB at 10kHz
Main power supply	220 ~ 240V AC at 50~60Hz
Power consumption	280W at rated power
Dimensions (WHD)	420 X 84 X 350 mm
Weight	15.7kg

4. System Block Diagram



5. Controller Main, Notebook interface, Control panel

Controller panel



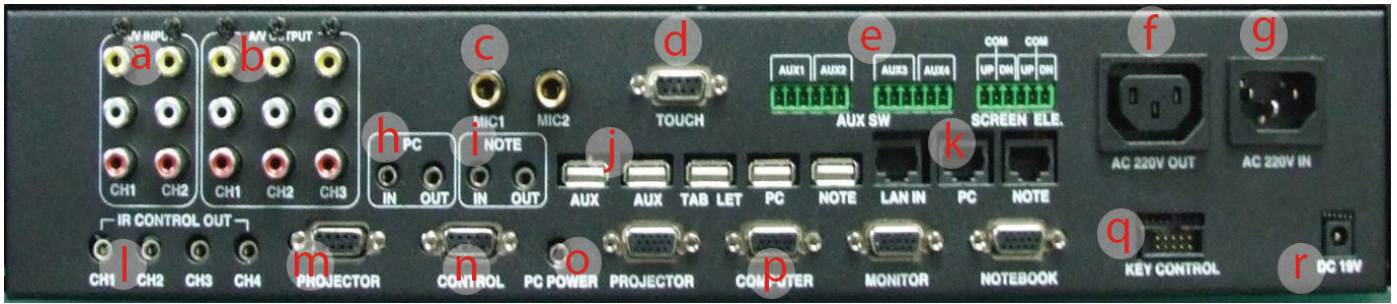
Notebook Interface



7" LCD Control Panel



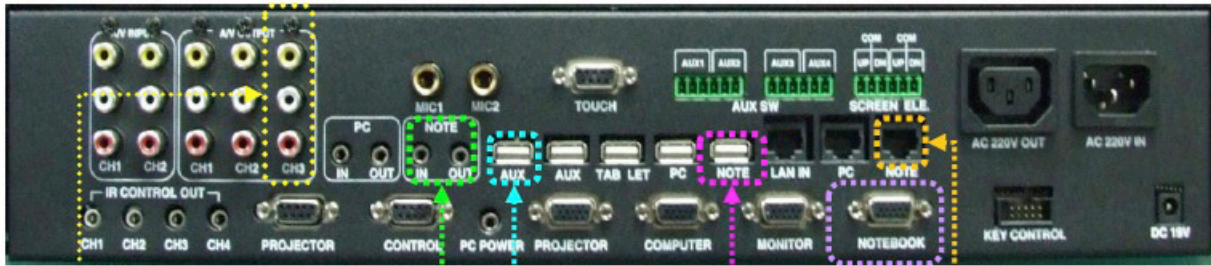
6. Controller Back panel



- a** A/V OUT: Video Sound Output port. Connect to Projector & Amplifier.
- b** A/V INPUT : Connect DVD, VCR , Visualizer, etc.
- c** Mic. Input: Connect MIC 1, MIC 2. (MIC1 supports 12V phantom power)
- d** TOUCH : Connect LCD touch screen.
- e** POWER CONTROL: To control external devices power & screen elevation.
- f** AC Out: Security function port. If USB KEY is pulled out, all connected devices go off.
- g** AC In : Supplies power to control AC Out and 220V Devices (screen, elevation).
- h** PC Sound: PC's speaker port is connected to IN port, mic port is connected to OUT.
- i** Notebook Sound : Notebook speaker port is connected to IN, MIC port is connected to OUT.
- j** USB : USB from monitor is to Tablet, AUX port is used to expand at PC. (see configuration)
Others are selector ports of PC and Notebook. Each one connects to PC and Notebook.
- k** LAN : Selector port of Notebook and PC. Main LAN cable is connected to LAN IN, others are connected to PC and Notebook's internet port.
- l** IR Control : for IR signal output.
- m** PROJECTOR : RS-232 port to control projector. (connected to projector)
- n** CONTROL : Connected to PC by RS -232
- o** PC POWER : PC power control port (Connected to PC's power port)
- p** RGB distributor : Distribute RGB signal and output images to monitor and projector (selector function included)
- q** KEY Control : Port connected to keys
- r** Power: 19V 3.16A

7. Controller connection

AMC - 6000 (Rear panel)

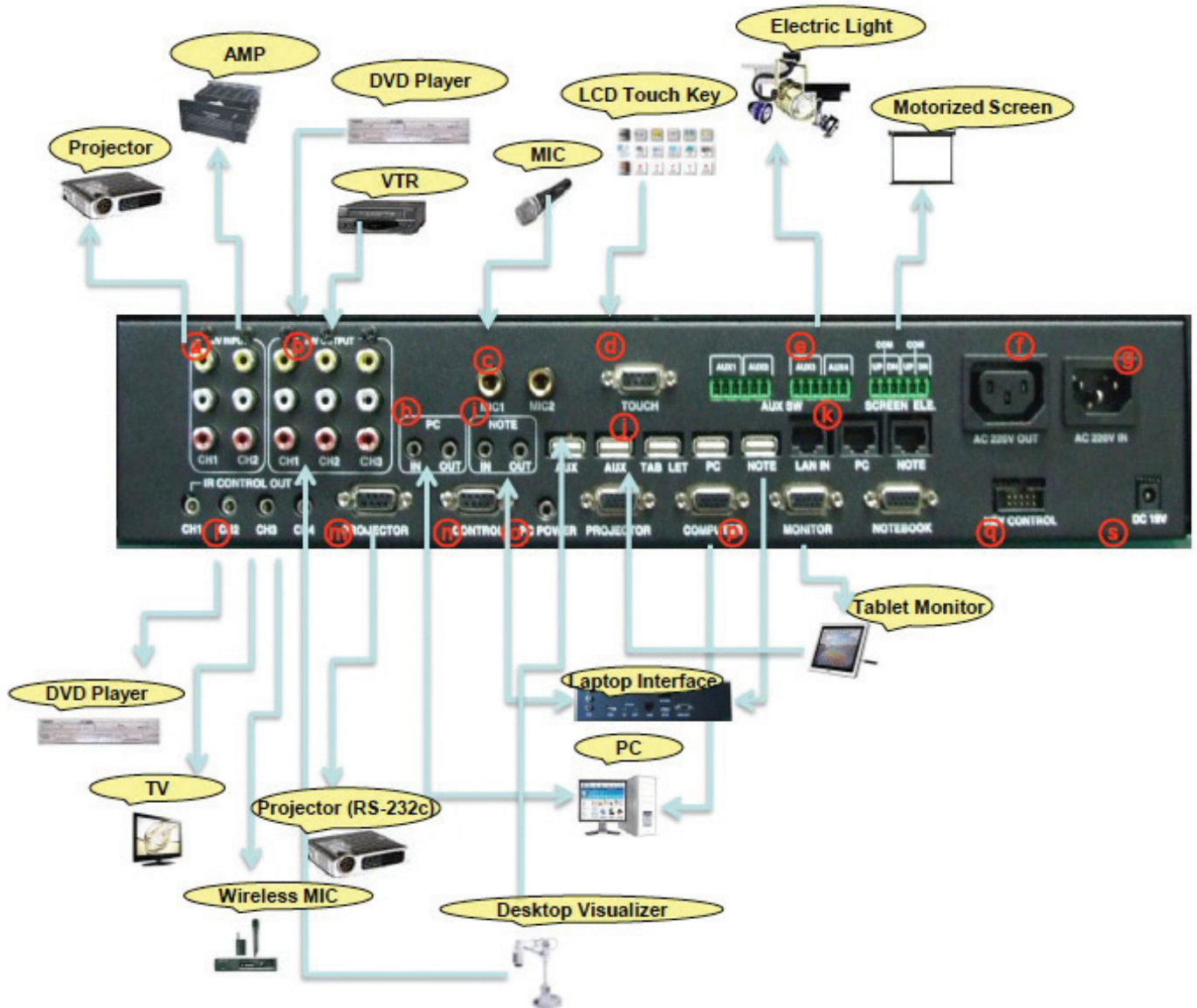


Notebook Interface rear panel



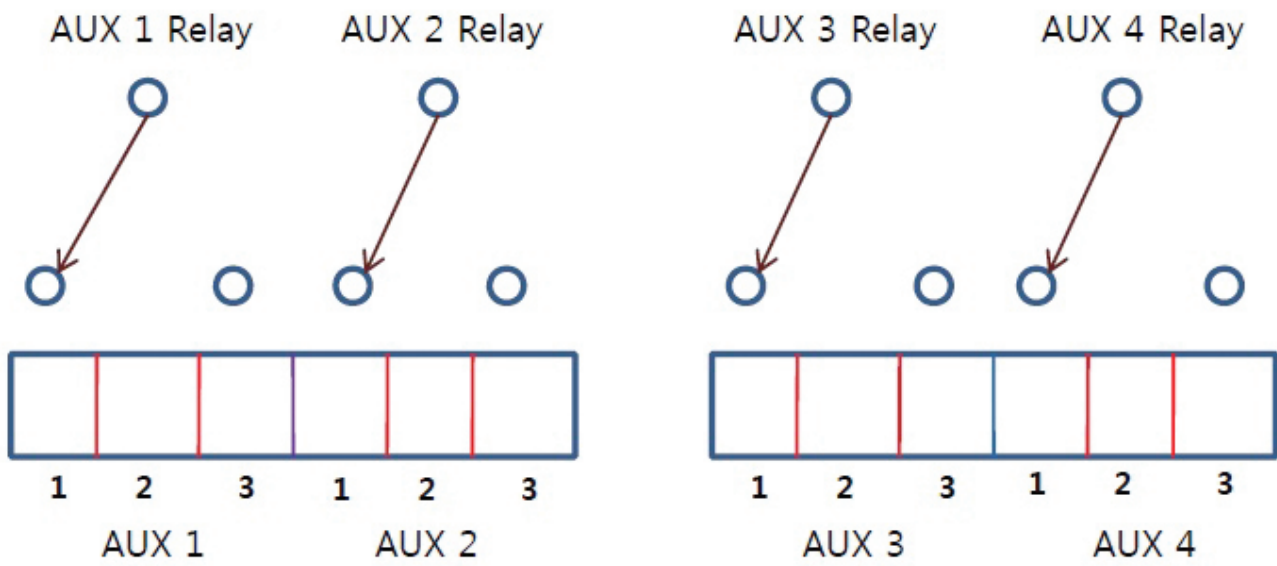
Notebook Interface front panel

8. Controller connection layout



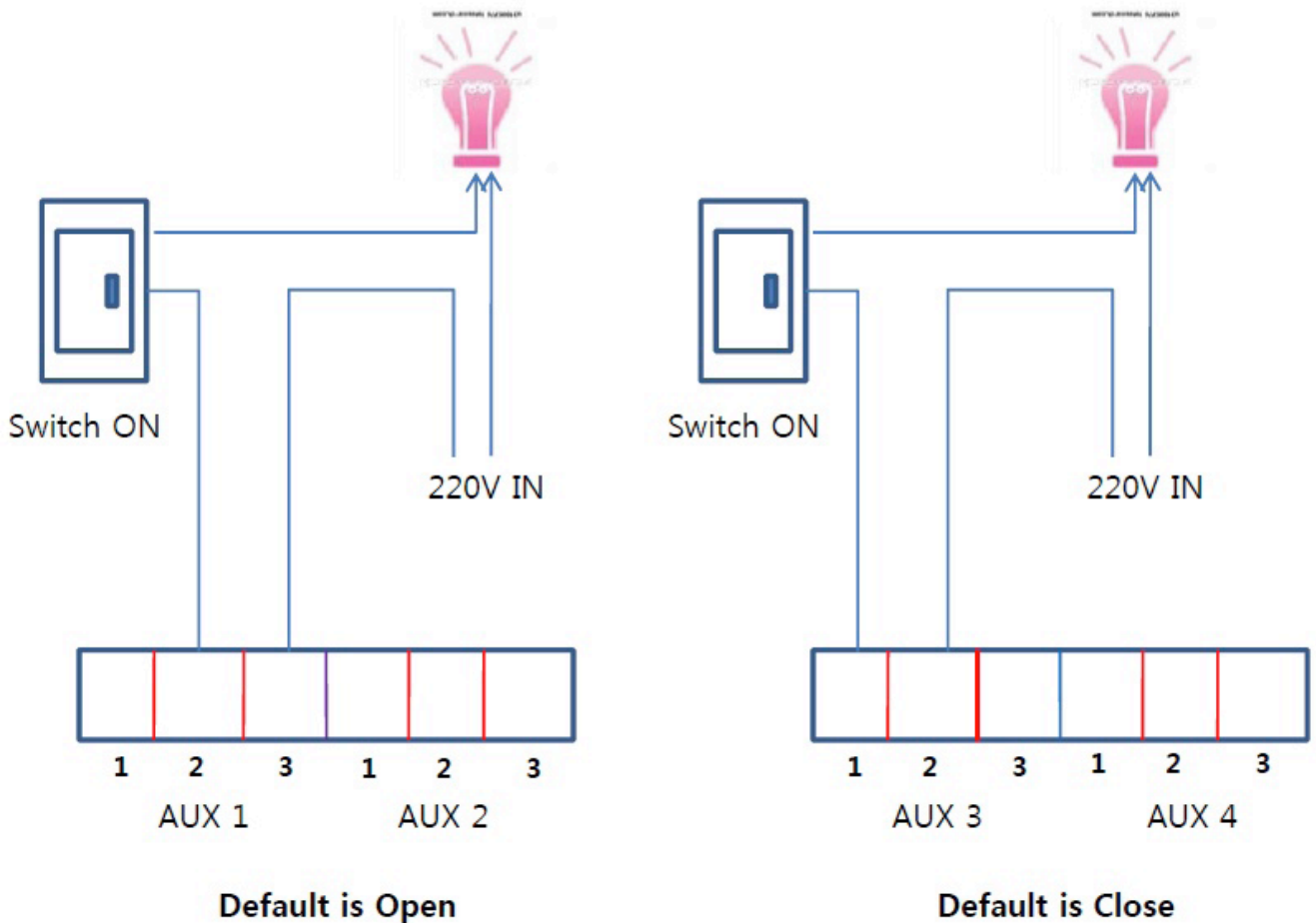
Electric Light control, Relay default positions.

AUX Control



The default is connection 1 and 2

How to Connect

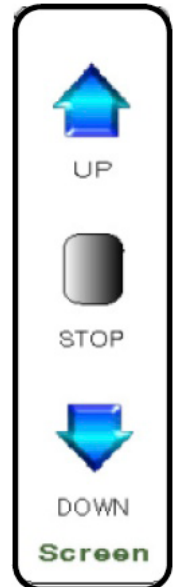


Motorized screen and elevation control. Operating relays with 220 V power or without power

Motorized screen and elevation control (220V)

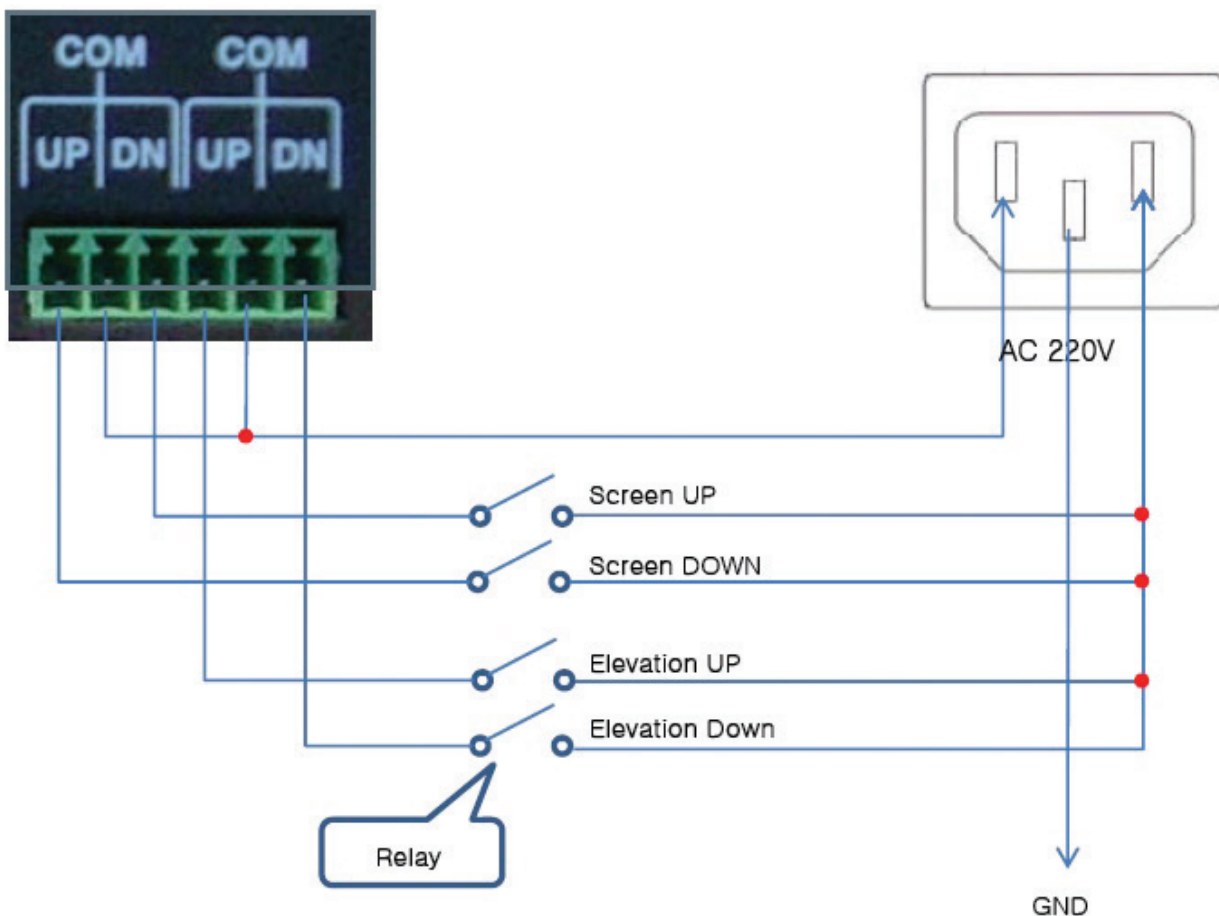
- 1) AMC - control the screen by 600 touch controller
- 2) Push the Down button to lower the screen
- 3) Push the Stop button to stop lowering or raising the screen
- 4) Push the Up button to raise the screen

*Note, The controller is set up to control the projection screen and projector elevator by the relays for this function, switching the 220V that is fed to the controller on the right top socket. If you intend to control these functions by simply opening and closing a circuit that is not powered by the relays itself, do not attach the 220V in the socket at the back of the controller. Instead wire as below, otherwise systems attached to these Phoenix plugs may get damaged.



Internal layout for screen and elevation (220V)

The screen and elevation each have 2 relays.



9. Operation Instruction

- If you press START button, screen and elevation will come down and the projector will be turned on. This function can be expanded to other external devices like fluorescent light, electric fan, air conditioner, etc.
- If the END button is pressed, screen and elevation will go up, and the projector will be automatically turned off.

Use of a computer

Desktop PC

- In the LCD Menu, press the PC button.
 - * at initial power input, PC mode will automatically be set.

Notebook

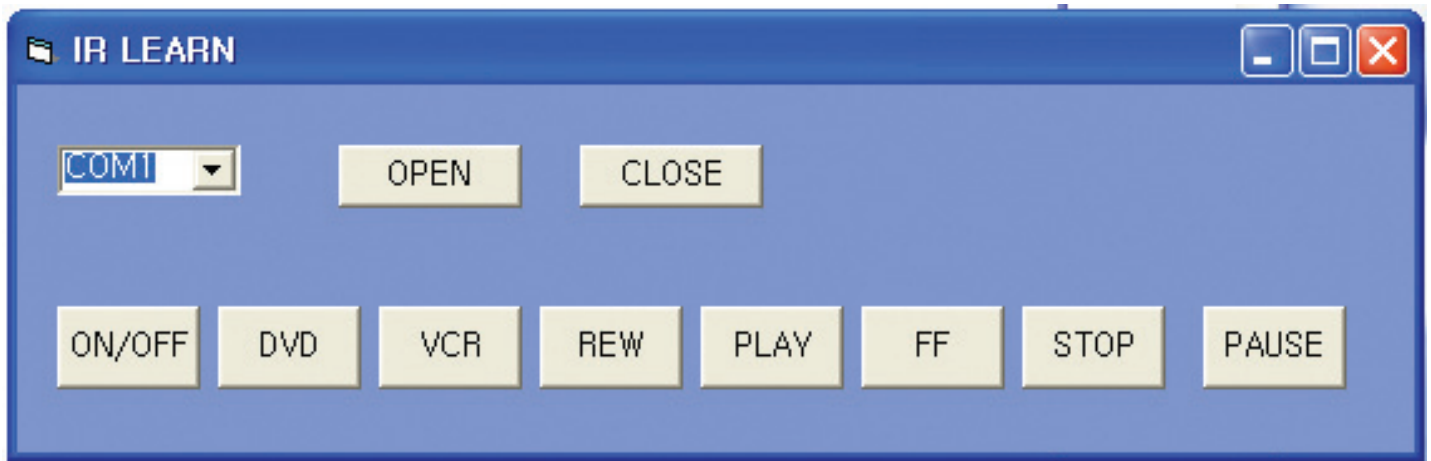
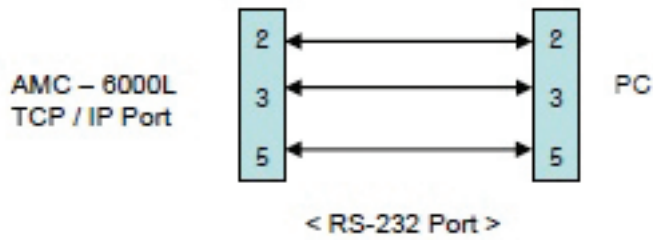
- In the LCD Menu, press the NOTE button.
- Connect the Notebook power adaptor, RGB Cable, USB, SOUND IN / OUT, LAN cable to the notebook connection socket. Internet, sound, and pen function will automatically be set.
 - * In order to use a tablet on the notebook, you need to install the tablet driver on the notebook as well.
- To return to the main computer, press the PC button.

IR Learning

- The Controller can save remote control's input signal and do the control.
- How to program
 - At Television MENU on the LCD, press IR Learn button, the controller panel LED will be on. (Program Ready Status)
 - Press desired key on the LCD.
 - Press remote control signal for that key on the controller main set.
 - Upon the desired button input completed, LED will flicker.
 - In case of wrong input, LEC will flicker fast. Then, input again.
- How to connect
 - On the back of controller, "IR Control Out" port is consisted of 4CH. Connect IR cable to the desired channel, and attach to the IR light receiving part of the equipment to be controlled.

When there is no response to pressing the button, there is an input error, or the light emitting position of the cable is not correctly matched with the light receiving part of the device. In this case, follow the procedure again.

In order to input IR Learning into the Controller, the PC RS-233 port whould be connected with the Controller's control RS-232 port.

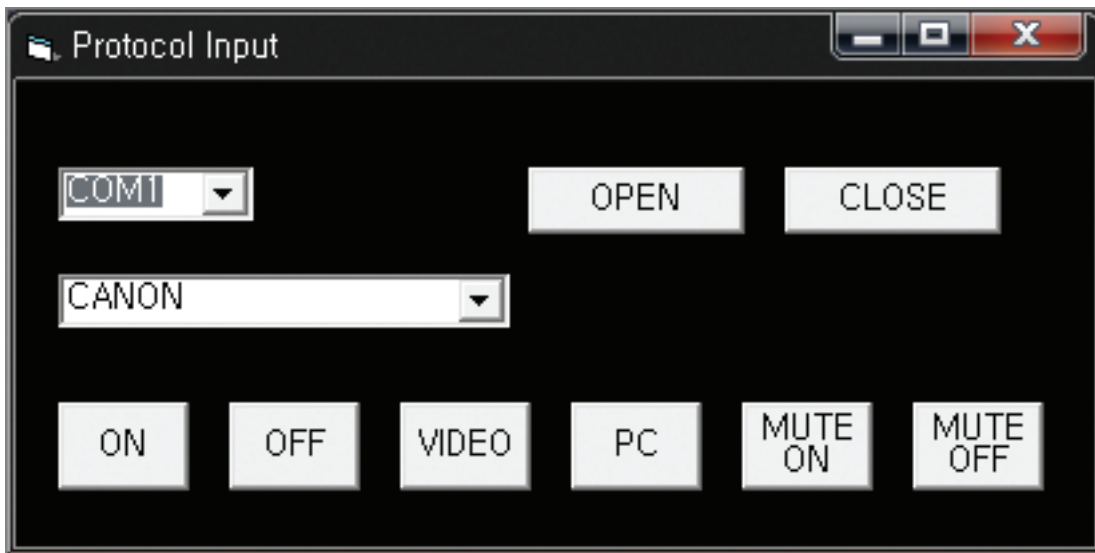
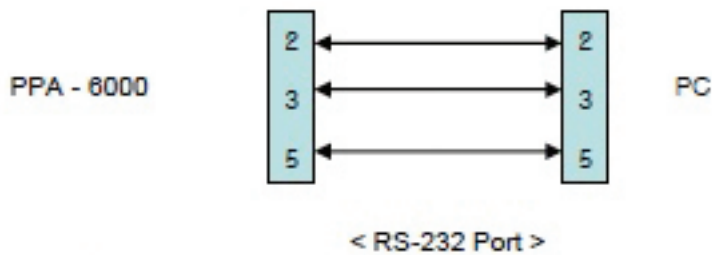


Sequence

1. First copy vb6ko.dll file in the System32 folder, and install Vbruntimes.
(If it is not installed, you will get an error.)
2. Next, execute Protocol Input and set the COM Port. (check your PC's port number.)
3. Press the Open button, Program Input LED is lit.
4. On the Window screen, press the ON/OFF button.
5. Press the Remote control's ON/OFF button while you point it at the Controller's IR Receiver.
6. If the input was successful, the LED blinks 3 times. If it wasn't, the LED blinks rapidly.
7. Input other buttons following the above procedure.
8. When all input is completed, use the IR Cable to connect to the Controller's IR Port, and place it near to the IR Receiver you want to control.

Projector Protocol Input

In order to input Projector protocol into Controller, PC RS-232 port should be connected to the Controller's control RS-232 port.



Sequence

1. First copy vb6ko.dll to the System32 folder, and install Vbruntimes. (If it is not installed, you will get an error.)
2. Next, execute Protocol Input and set COM PORT. (check your PC's port number.)
3. If you press the OPEN button, COM PORT opens. If the PORT setting is wrong, an error message is displayed. In this case, open the device manager and recheck the port before resetting.
4. Select your Projector.
5. If you press the next protocol button, a matching LED flashes. While the protocol is being input, do not press any other button, and wait until the LED stops flashing. If an other button is accidentally pressed, the next button input can not be made. In this case, connect the power again and proceed with the input.
6. After all input is completed, press CLOSE button to close COM PORT.

10. Trouble shooting

Problem	Check Points
No Power	<ul style="list-style-type: none">• Is the Power cord ?• Is the Podium Power switch ON ?• Is the Monitor power connected ?
No image	<ul style="list-style-type: none">• Is the PC select switch on the upper control panel properly selected ?• Is the Input device cable connected ?• Is the Tablet monitor's VGA input connected ?• Is the Output device cable connected ?
Strange color	<ul style="list-style-type: none">• Check if the pins of the computer cable are broken or bent• Adjust the brightness and contrast of the Tablet Monitor
Microphone doesn't work	<ul style="list-style-type: none">• Check the transmitter battery
No sound	<ul style="list-style-type: none">• Check volume levels• Is the Computer input/output connected ?• Check Notebook settings for Voice input/output