

ILS21HL INSTRUCTIONS MANUAL

ILS21HL

User & Installation Guide

ILS, Intelligent Lectern
Systems BV:

Indusrieweg 22
NL-9403AA Assen
the Netherlands

+31 20 24 00 232

www.intelligentlecterns.com





Contents

Quick Sheet	1
Introduction	2
Sho-Q.....	3
ILS21HL Presentation System Operation	3
Specifications	4
General.....	5
Extended	6

Quick Sheet

Introduction

LS 21HL has been developed with the single task of improving any kind of presentation, while retaining the functionality of a normal PC. This lectern possesses a 22" wide HD screen touch monitor and an integrated PC. It is placed on a firm floor-standing foot with electric height adjustment.

The system is provided with a XLR microphone socket with shock-mount and lighting over DIN A4 / A-size connection next to the monitor. On request the system comes on a solid fitting table stand or ready to be integrated in the client`s bespoke lectern or podium environment.

For users who require the usage of their own notebook, the new ILS21ILS21HL includes all the connections needed to switch between the ILS21ILS21HL and a notebook for displaying any source of presentations.

Combined with Sho-Q presenter support tools, the system adds confidence to the user - and productivity to meetings - with seamless execution of multiple presentations. Windows 7 and Vista users may use Sho-Q 7, which adds pen and touch interactivity also.

Sho-Q 7

The ILS21ILS21HL comes with Sho-Q 7 presentation software. This is the newest version of the Sho-Q series which offers complete compatibility with Windows 7 and the existing MS Powerpoint versions.

To start using Sho-Q, a projector or an external display has to be connected to the ILS21ILS21HL lectern via a VGA connection. Then the presentations can be imported, either through setting them up with sho-Q Planner, by using sho-Q presenter`s browser, or by inserting a USB memory stick with a Power Point presentation that has been prepared with Sho-Q Pre-processor. Figure 1 shows the selection window of Sho-Q 7 with various presentations set up for demonstrative purposes. The software is intuitive to learn and allows for great flexibility in maneuvering through the presentation while presenting. Switching between the different presentations uploaded in Sho-Q 7 is made easy and fast which saves time when setting up.



Sho-Q presenter window with different presentations in it

FIGURE 1

Find more information about the use of Sho-Q in this ILS21HLUser manual. For software installation see the Installation manual section.

ILS21HL Presentation System preparation



FIGURE 2



Screen controls FIGURE 4

After switching on and establishing a VGA or HDMI connection with a projector or a second monitor, the lectern is ready to be used. Figure 2 shows the front side of the lectern where the power button is located and the multiple card readers.

The system is equipped with the option of switching between two types of control: the internal ILS21 PC, or if the client prefers – an external control such as a notebook, other laptop or a PC. This feature is restricted to use of the VGA connections. Multiple cable connections are provided in order to fit the specified scenario. Figure 3 illustrates the multiple connectors.



Notebook panel FIGURE 3

The cables have to be connected to the lectern’s VGA and USB plugs on the notebook panel, as well as to the VGA and USB port which belongs to the notebook. After this is done, a single switch operates between the lectern and the external control. Note that the switch will only function when the USB cable is attached, the switcher draws its 5V from the notebook, when removed, the ILS21HL automatically returns to the default connection and shows the ILS21 PC information.

Internal monitor control:

The ILS21HL features a state-of-the-art DELL monitor with ultra wide viewing angle.

5 buttons are implemented for the screen adjustment. **The lower one is a switch off and on button and the user should be careful not to switch off the monitor by mistake while using these controls. On request this feature gets blocked.** Figure 4 is a snapshot of the controls.

Find next to the top edge of the monitor the electrical switches for lift up and down, as well as the light switch. Next to these buttons find the sockets for the microphone (with shock-mount) and for a reading light (Figure 5).



FIGURE 5

Figure 6 shows the multiple card reader ports which are provided on the front panel, as well as the 4 USB inputs. Next to the USB ports, the DVD- Rom can be found with the power button at the right.



FIGURE 6

The steps of using this system depend on the user and his or her presentation desires. The basics of operating with ILS21HL and troubleshooting can be found in the User manual. If the user is not well acquainted with the setting up, the Installation manual section will provide the necessary information.



Specifications

Details internals:

Unit	Brand	Specification	Remark
Main board	Norco	CPU: supports Intel Penryn/Core 2 Duo /Celeron M processors, 800/1066MHz Front Side Busbar P7350 – 2 GHz installed	<ul style="list-style-type: none"> ✧ Support Infrared, ✧ Support GPIO ✧ Support BIOS Gas Defense ✧ Support Instant Recovery ✧ Support LVDS
		System Memory: 2x204-Pin DDRIII 800/1066MHz SO-DIMM, Maximum 8GB, 20	
		Chipset: Intel GM45+ICH9EM	
		I/O chip: Winbond W83627DHG-P	
		Ethernet: Realtek 8111C, 1000Mbps, 2x RJ-45	
		BIOS: 8M-bit SPI Flash	
		Watchdog: timer included	
		State Detection: voltage, fan speed and temperature	
		Display: support VGA,DVI,HDMI,LVDS and TV-OUT display output	
		Controller: Intel GM45with integrated GMA 4500MHD	
		Video card Memory: Dynamically shared 512MB system RAM	
		Resolution: CRT Maximum 2048×1536@85Hz, LCD Maximum 1920×1080@60Hz	
		Storage: 2xSATA II,1xCF	
		Audio: Realtek ALC888, Speak-out, Line-in	
		Working temperature: 0℃~60℃	
		Storage Humidity: -40%~80%	
Working Humidity: 0%~95% relative humidity, no condensation			
CPU	Intel	Suitable Type: laptop CPU	
		CPU Series: Core 2 Duo P7350 installed	
		Core Quantity: 2	
		Core Type: Penryn-3M	
		Basic Frequency: 2000 MHz	
		Front Side Busbar: 1066 MHz	
		Execution Craft: 45nm	
		First-level code cache: 32 KB per core	
		First-level data cache: 32 KB per core	
		Second-level cache: 3 MB (On-Die, ECC, ASC, Full-Speed)	
		Maximum Power Cost: 25w	



		Package Measure: 35mm*35mm	
Cooler	Cooler Master	All Copper Radiator, Silent Fan	
Memory	Kingston	Type: DDR III	Single memory
		Basic Frequency: 1333MHz	
		Capacity: 2GB	
Hard Drive	Seagate	Interface: SATA 3Gb/s	
		Cache: 16MB	
		Capacity: 320GB	
		Size: 2.5"	
		Rotating Speed: 7200 RPM	
		Supports G-Force Protection technology	
		Supports SmartAlign™ technology	
Optical Drive	H-L	Type: slot-in	
		Standard: Combo	
		Interface: SATA	
		Cache: 2MB	
Power	delta	Power Rating: 250w	PFC initiative
		Input Voltage: 100-240V/47-63Hz	
		Certification: CE, FCC, CCC etc.	
Display	LG	Panel Size: 54.61 cm (21.5 inch)	IPS technology, achieves color consistency in almost any viewing angle
		Aspect Ratio: widescreen (16:9)	
		Panel Type IPS (in Plane switching)	
		Optimum Resolution: 1920 x 1080, 60 Hz	
		Contrast Ratio: 1000:1 (typical) , 10,000:1 (dynamic)	
		Brightness: 250 candela/sq.m. (typical)	
		Response Time: 8 ms (gray scale to gray scale)	
		Angle of view: Vertical 178°/ horizontal 178°	
		Color Gamut: 82 %2 (100 % s RGB coverage)	
		Color Depth: 16.7 M	
		Pixel Space: 0.247 mm	
		Voltage: 100 to 240 VAC/50 or 60 Hz ± 3 Hz/1.5A(typical)	
		Power Cost: 22 W (typical)	



Details externals:

general specifics of the ILS21HL:

PC: Core2Duo PC, Intel m/b, 2GB, 320GB HDD, Windows 7, LAN hub

Screen: 22" full HD 1920x1080 screen with resistive touch

On the front panel: 4 USB 2.0, 1 DVD- Rom, multi-card reader, power button

On top: electrical height control switches, reading light switch, XLR3 microphone socket, XLR4 Light socket, 5 control buttons for the monitor settings.

Notebook panel: Built-in A-B KVM switcher to switch between the lectern and a notebook, VGA port, Audio jacks, wireless antenna, USB, spare button.

The ILS21H has been certified for meeting the following standards:

CE - cert. # SEM10084384

RoHs - cert. # SEM10082155

FCC - cert. # SEM10086539

User manual

In this manual the basics of operating the ILS21HL and Sho-Q7 are explained as well as certain troubleshooting possibilities.

ILS21HL controls and connections

Turning on lectern

The ILS21HL lectern is started like any other commercially available PC. If the PC is not switching on, the power cable should be checked. There are two possible locations of the problem. The first possibility can be that the cable is not plugged either in the power socket on the ground or that the lectern itself is not receiving power from the main power cable in the pillar. For solving this, the screen platform has to be removed from the stand and the connections checked.

Figure 7 demonstrates the proper connection between the lectern and the main power cable running through the pillar.

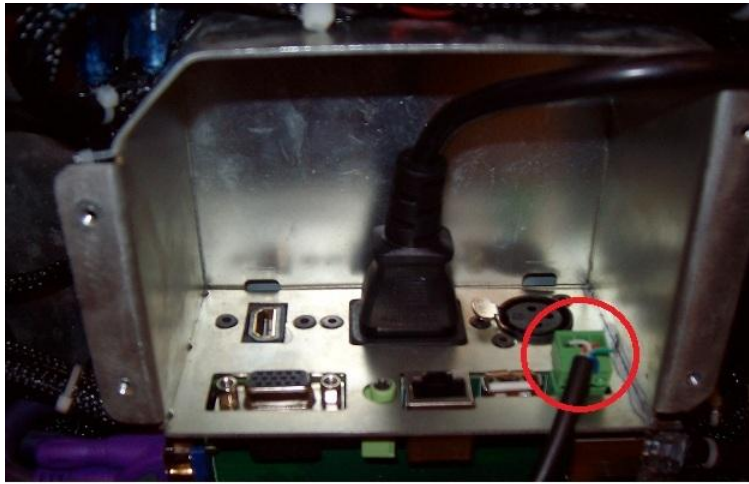


Plug in for power cable

FIGURE 7

Height control

The ILS21HL is capable of height adjustment. The user can adjust the system according to his or her desire, using the two switch controls, which can be found next to the screen and the reading light switch. The direction of adjustment is marked under the switches. If the system is not working then the phoenix connectors, located on the back of the PC, should be checked. Figure 8 shows the location of the phoenix plug in its proper placement.



Electrical height control plug

FIGURE 8



Microphone and light

FIGURE 9

Light

The switch for the reading light is positioned next to the height controls. The light has to be carefully plugged in the XLR4 socket. In case the light does not work, the switch should first be checked (Figure 9).

Microphone

The microphone can be directly connected to an amplifier from under the PC board audio socket. In case of problems, this connection has to be checked first. Figure 10 shows the location of the XLR4 cable.



Microphone socket

FIGURE 10

Multi-card reader

The ILS21HL is equipped to offer maximum data exchange flexibility. A wide range of industry standard SD cards can be read by the internal processor of the ILS21H. It should be noted that the card reader is not equipped with a spring lock. Therefore the card should not be pushed; it will fit in only with careful positioning. If the lectern does not recognize the hardware, the card should be reinserted again. Figure 11 shows the various card types which can be inserted.

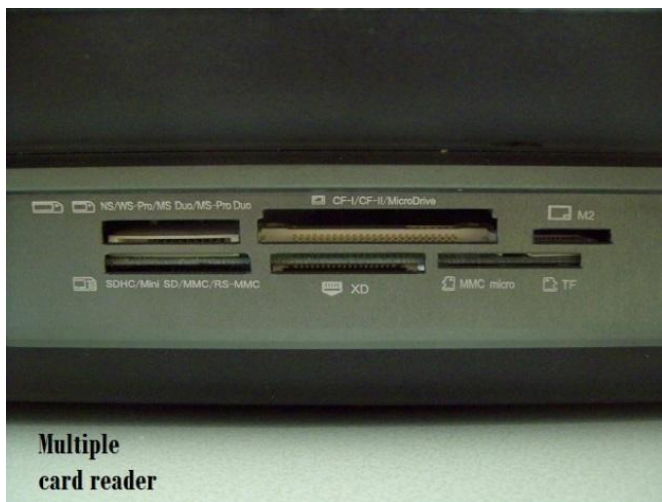


FIGURE 11

USB ports

The 4 USB ports on the front panel are available for the user memory sticks at the same time. For their usage, the mode should not be changed with the ILS21-notebook switch. If the PC does not recognize the user's USB input and the device has already been checked, the internal connections inside the lectern will require inspection (Figure 12).



FIGURE 12

DVD- Rom

The DVD- Rom is positioned next to the power button on the front panel. The client can load his or her needed information on the ILS21HL internal computer or burn a disk with the desired files.

Screen adjustments buttons

The ILS21HL system possesses 5 adjustment buttons which control the screen settings. They can be found next to the screen. The general functions are listed below from top to bottom as shown on Figure 14:

- 1-Present modes**
- 2-Screen Brightness and contrast**
- 3-Menu**
- 4-Exit**
- 5-Switch on/off**

While using the buttons, the user should follow the new controls that the buttons will be responsible for, which will appear on the screen, next to each of them.



Screen controls FIGURE 14

Connecting ILS21HL to a projector or other display

Connecting the ILS21HL to an external display or a projector is a fast and easy task. The VGA output connector of the lectern is positioned underneath the PC next to the other output connectors. When setting up the connection it is important that the screws are tightened.

Several options are available for the ILS screen- projector/screen connection. They can be selected from the Start menu > Connect to a projector:

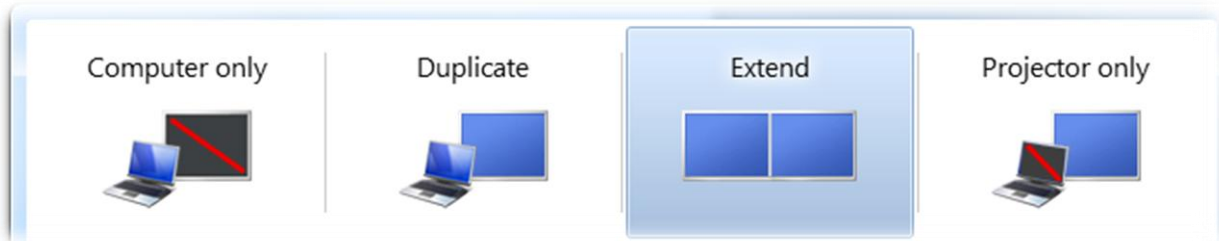


FIGURE 15

It is important to understand the specifics of these connections in order for the presenter to be comfortable while presenting and to be able to distinguish between a problematic connection and an incorrect one.

When the user wants to choose to duplicate (clone) the screen, the resolution of the ILS screen has to be altered according to the resolution of the receiver. This can be simply adjusted through the screen resolution menu, which will appear after a right click on the desktop (Figure 15).

Switching between ILS main PC and a notebook

For making the switch between the ILS21HL lectern PC and the desired control, for example a notebook, the notebook panel must be used.



Notebook panel

FIGURE 16

In order to switch between the ILS21HL and a notebook, a VGA, audio and USB connection must be established. It should be noted that on the panel there is a spare button with no function and it should not be mistaken with the switch.

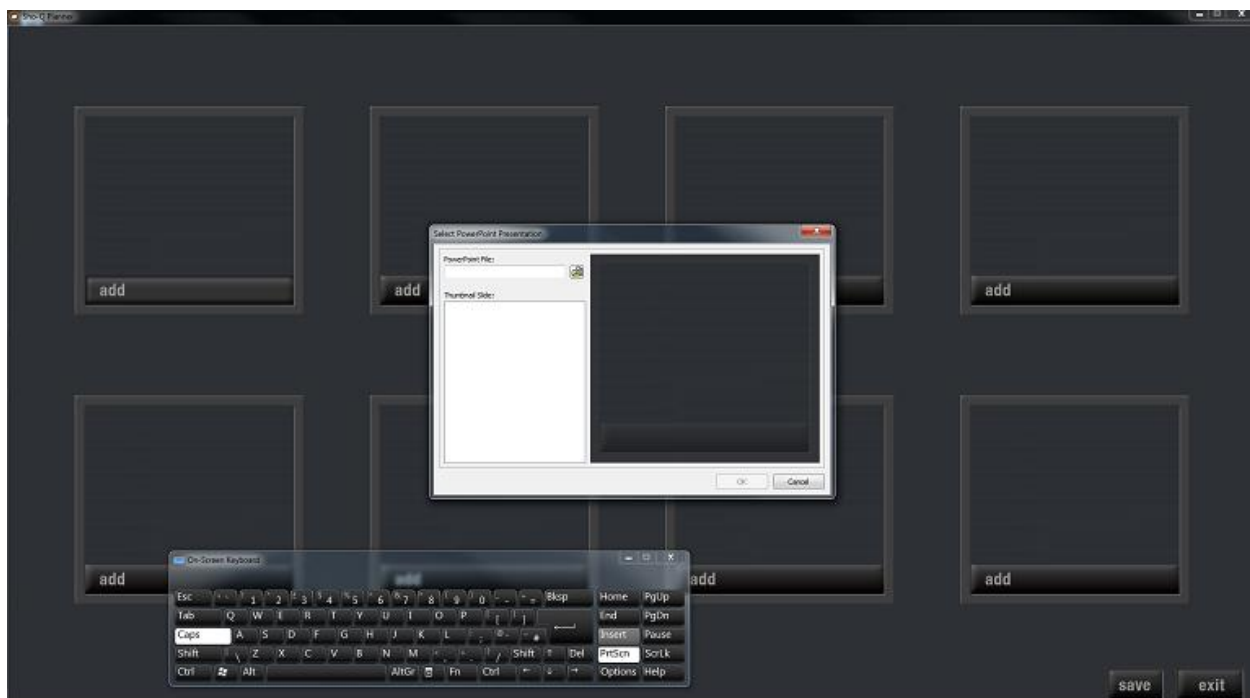
Sho-Q

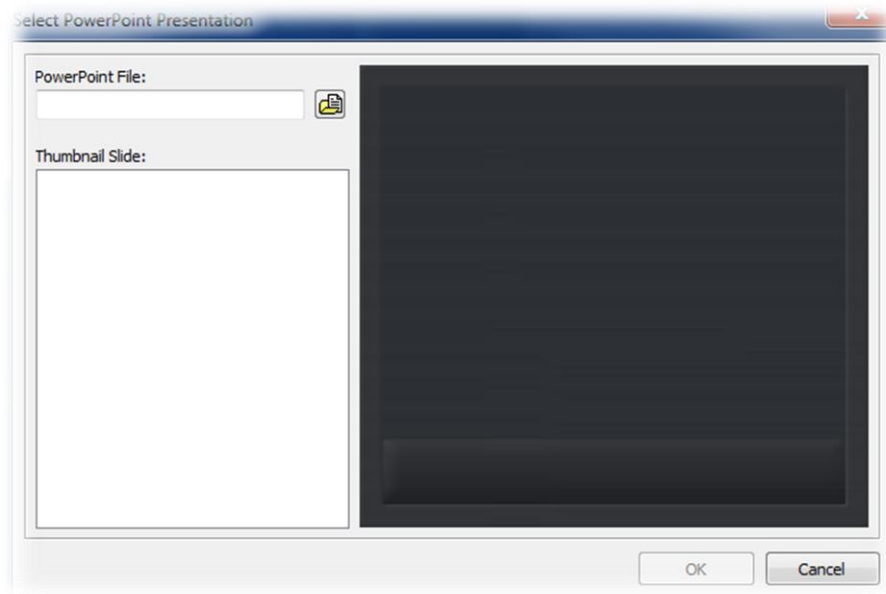
The Sho-Q software generally consists of three components: Sho-Q planner, Sho-Q presenter and Sho-Q preprocessor. In this section the user can find the basic operational specifics of the Sho-Q components. For more information about the installing of the software, the Installation manual is provided.

Sho-Q planner

The Sho-Q planner application is helping the user with planning the presentation materials and arranging them in a comfortable way.

The pictures below shows the Sho-Q planner window when a user adds presentation:





The little square windows are the places in which the user can add his or her Power Point presentations. After selecting “add” a dialog window will appear with a browse option. The desired presentation then can be selected and it will appear in the window next to the browser. All the slides will appear under the path line.

After adding the presentation successfully, it will be saved in the initial section the user has chosen. With Sho-Q planner the user can add up any number of presentations. After saving the file with the save button at the right bottom corner, Sho-Q modules will be created for each presentation, as well as a file for the plan, ready to be run by the Sho-Q presenter. Any of the Sho-Q modules can be added to the presenter as well and ran separately. To run the plan the user has created, all the modules and presentations have to be in the same folder as the plan file.

If the file is not running, the user has to check its properties and especially the program selected for its opening, which has to be the Sho-Q presenter. If other problems appear, the message panes will inform the user.

Sho-Q presenter

The Sho-Q presenter is the place where the user can add the needed presentations and operate directly with the options which the software provides. Moreover, after setting up a plan with the Sho-Q planner, the created file can be directly run by the presenter.

The window for the Sho-Q presenter is almost the same as the window of the Sho-Q planner. In addition it provides a clock for the user to know how the presentation is going with respect to the time frame the presenter has been given. Figure 14 shows the graphical user interface of Sho-Q presenter.

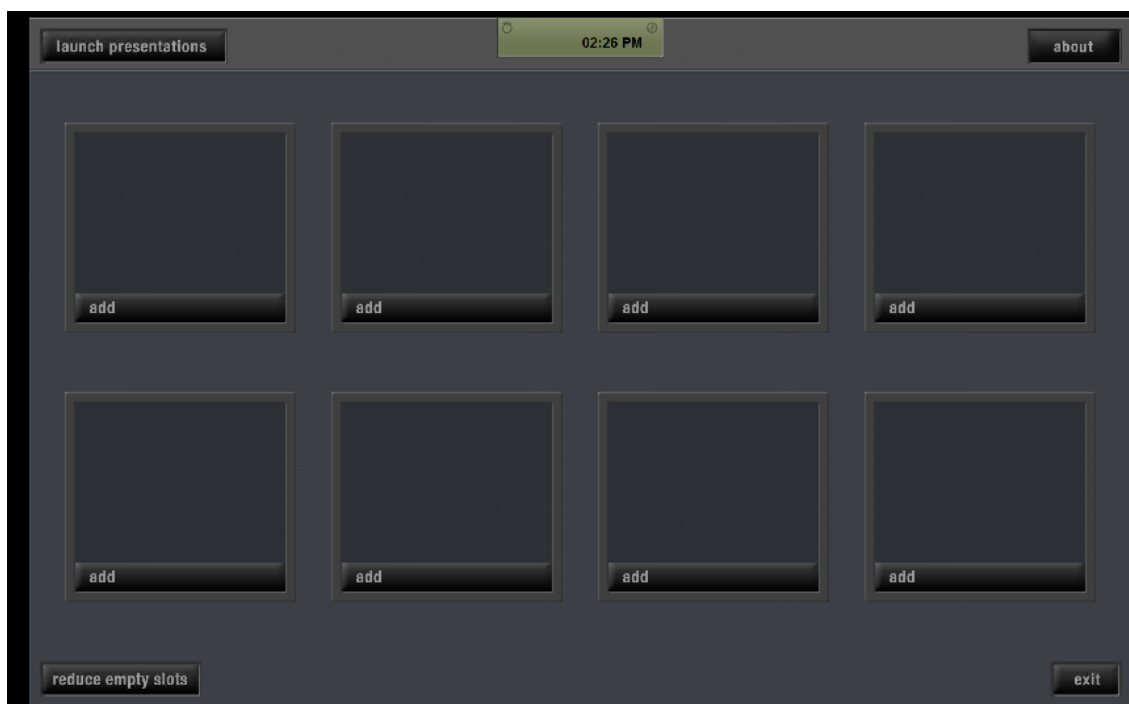
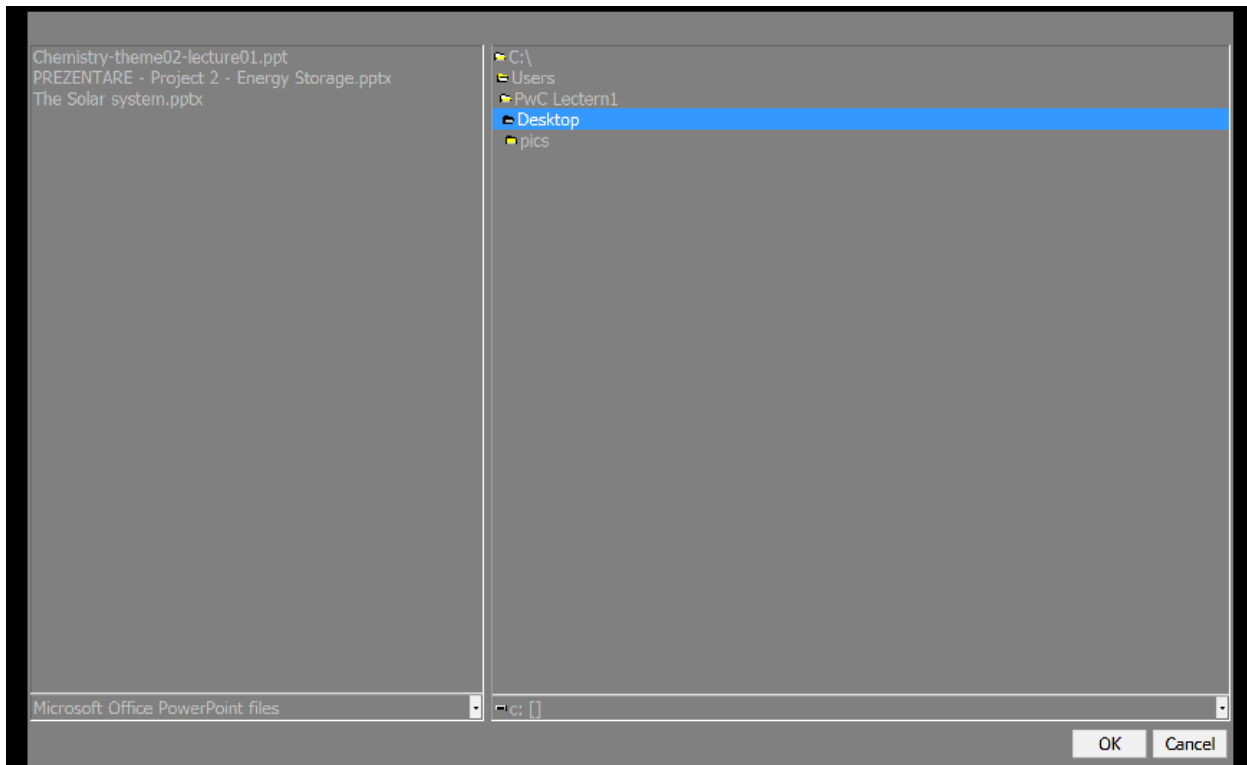


FIGURE 12

The Sho-Q presenter can then open directly a Sho-Q planner file and the presentations will be directly imported. But if no plan is prepared, the user has to select the presentations for the meeting through the “manage presentations” function at the up right corner and then add them similarly like in the Planner environment. In this case a new window will appear with the following browser options:



The user can browse through the computer's directories in order to import his or her presentations. The types of files that can be added to the presenter are the Sho-Q modules and MS PowerPoint files.

Sho-Q provides an option for the presentations to be imported automatically from the user's USB memory stick. When the presenter is started, the user can simply plug in his or her memory stick and the presenter will import the presentations from it. If they are not exported first by the preprocessor, the user has to wait until the Sho-Q modules of the presentations are created. Given that the presentations are not numerous, this will take very little time, but as the number increases, so will the time taken to finish the process. It is better if they are managed first with the Sho-Q preprocessor.

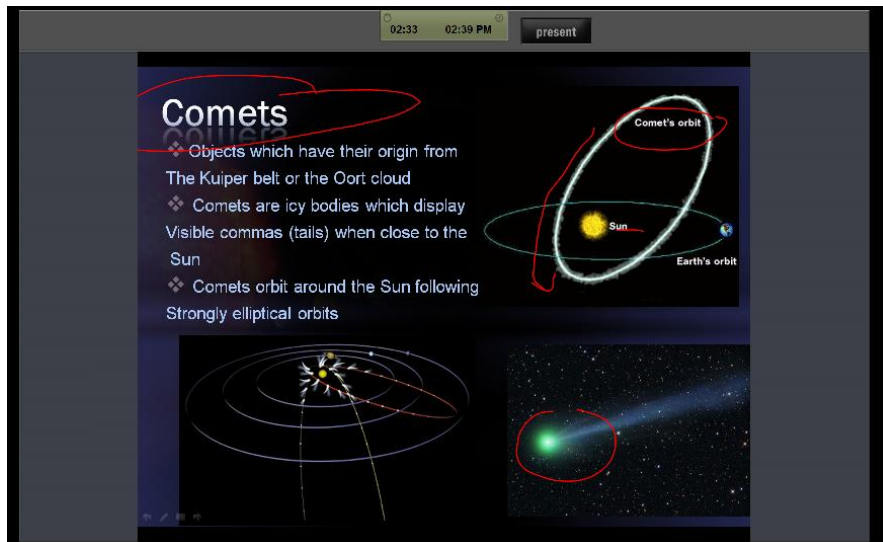
After all the presentations are ready, with the function "launch presentations" on the top left corner, the user can select each of them. The current slide, the next, and the previous ones will appear in different sections. During the presenting, the user can view all the slides of the current presentation or exit it and select another presentation and any slide from it.

While presenting, the user can build up a slide in both directions. The effects implemented in the PowerPoint slide can be selected or turned back. Moreover, if the client decides to choose

the previous or the next slide, after returning to the initial one, the build-up will still be at the step left the last time. The picture below shows that only the current slide is processed by the projector or exposed on the second monitor, while the presenter is able to observe the previous and the next one.



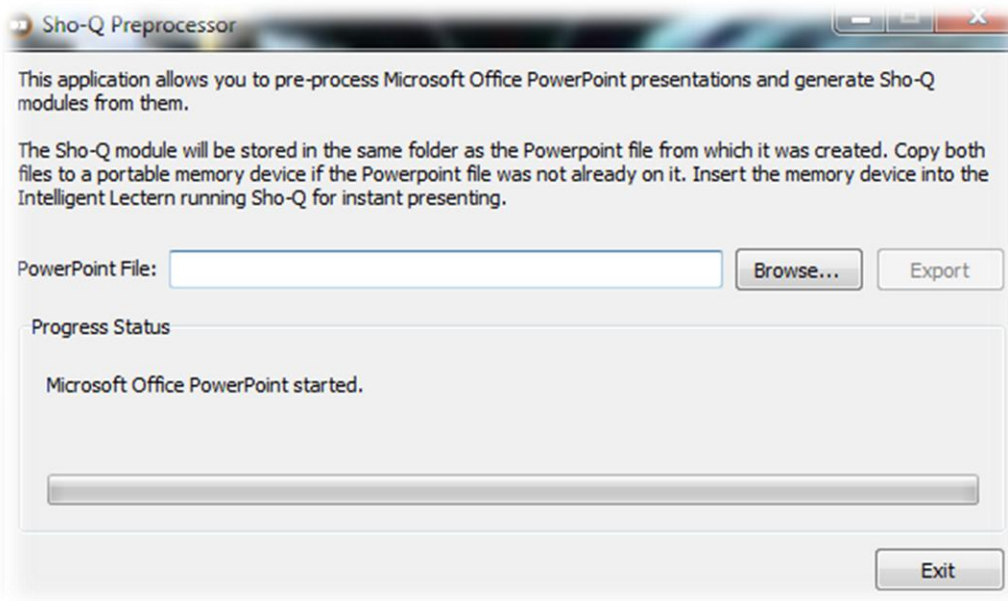
ILS21HL operates with Sho-Q7 version, supported by its Windows 7 operational system. This version provides pen interactivity. The client just has to select the pen mode, next to the clock and all the slides will be available for pen annotations. At the end of the presentation, all the writings can be saved or discarded.



Sho-Q preprocessor

The Sho-Q preprocessor offers the ability for any type of PowerPoint presentations to be prepared for Sho-Q presenter usage if they have been set up on the user's notebook.

When the preprocessor is selected it shows the following window:



The user has to select the presentations and Sho-Q modules of them will be created in a folder in the same directory. This way the user can just upload the presentations and the Sho-Q modules on a preferred memory stick and they will be ready for use by the Sho-Q presenter just by plugging it in.

Installation manual

In this manual the basic steps for Sho-Q7 installation are explained, as well as the specifics of the ILS21HL setting up.

Software Installation

The ILS lecterns are provided with the needed software. But if the user chooses to use a notebook, the Sho-Q preprocessor application is obligatory.

This section explains the installation of Sho-Q 7 components. The procedure is the same for all of them. So, in a case of various missing or troublesome Sho-Q elements, this procedure is always available.

The installation of Sho-Q is an easy and fast process, consisting of several steps for each component, as listed below:

Step 1: Download component

Visit the official ILS website and choose Software:

http://intelligentlecterns.com/ils_main/software.html

On this page the user has to choose the operational system of the notebook and the available version of Sho-Q will appear with all the three components of the application.¹ After choosing the component, the user can then download it.

In this case, the available type of Sho-Q is Sho-Q 7.0.4.²

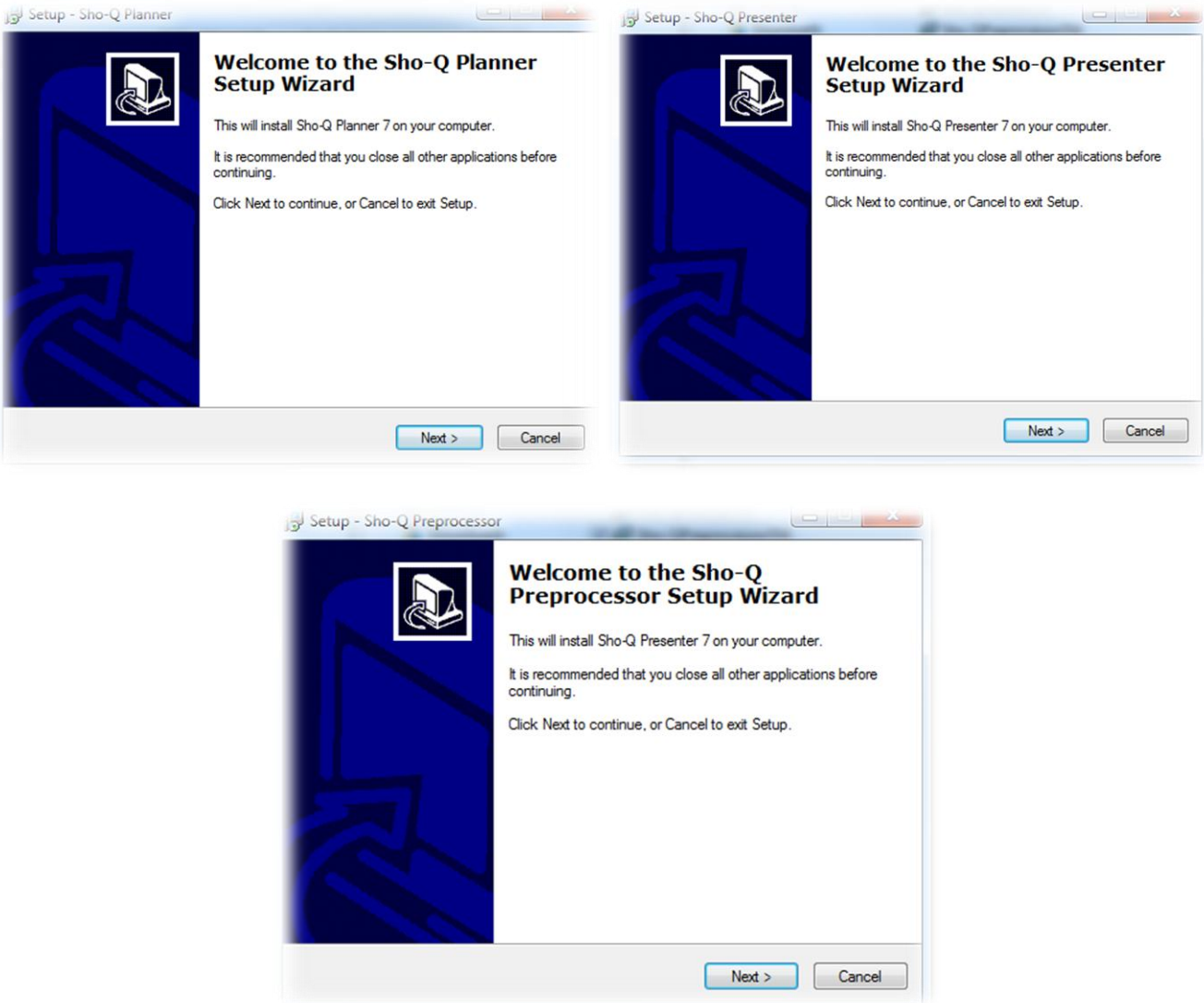
Step 2: Installing the downloaded file

After the file of the component is downloaded, it has to be run and its setup wizard will appear.

¹ Note that the set contains an evaluation copy of Sho-Q presenter. To remove the 'evaluation' mark from the program, you'll need to buy the software. Further details can be found in your package.

² The explained procedure refers to installing a Sho-Q7 version for Windows 7. If the operational system of the user is different, different version will appear but the procedure is similar.

Please note: Sho-Q7 is intended for 32-bit operating systems only, and fully compatible with MS Office 2007 and 2003. For MS Office2010, use sho-Q10 release of early 2012 otherwise staging on slides is not working properly.



Step 3: Following the steps in the setup wizard

1. License Agreement

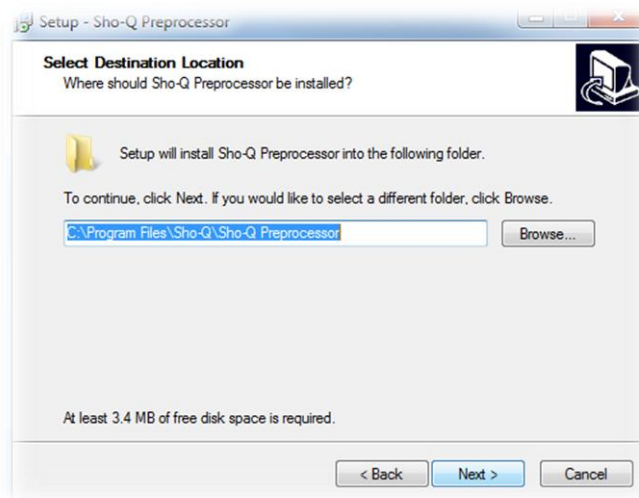
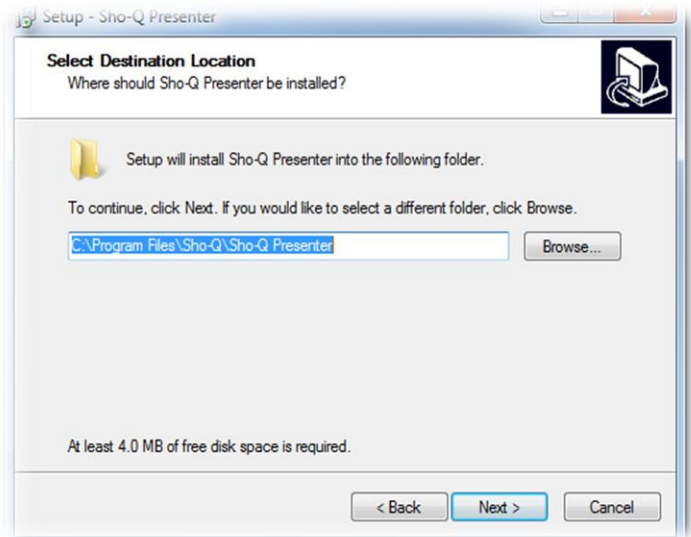
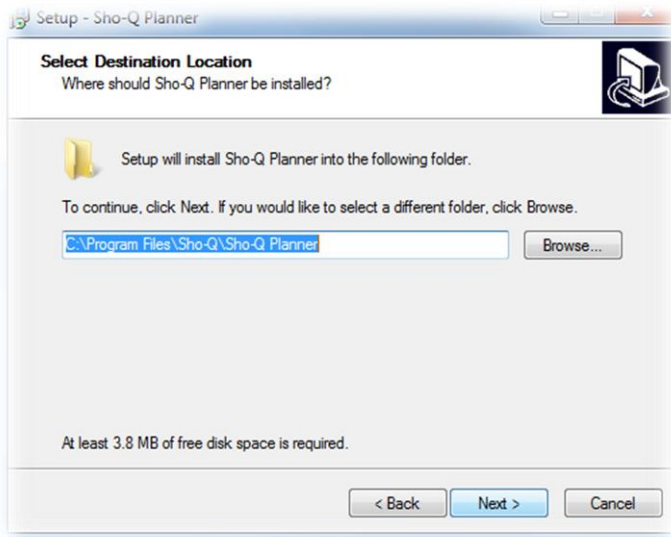
After clicking "Next", the License Agreement will appear:



After accepting the license agreement a window, the user has to select a destination folder for the component.

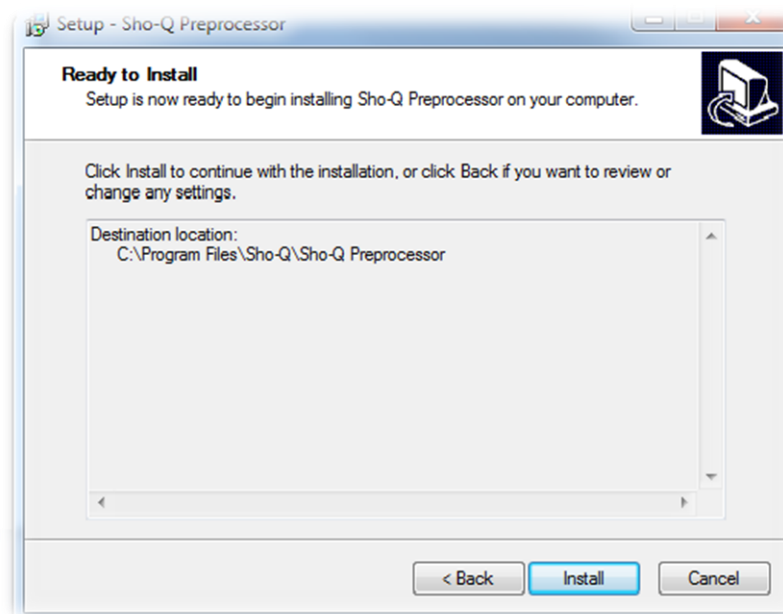
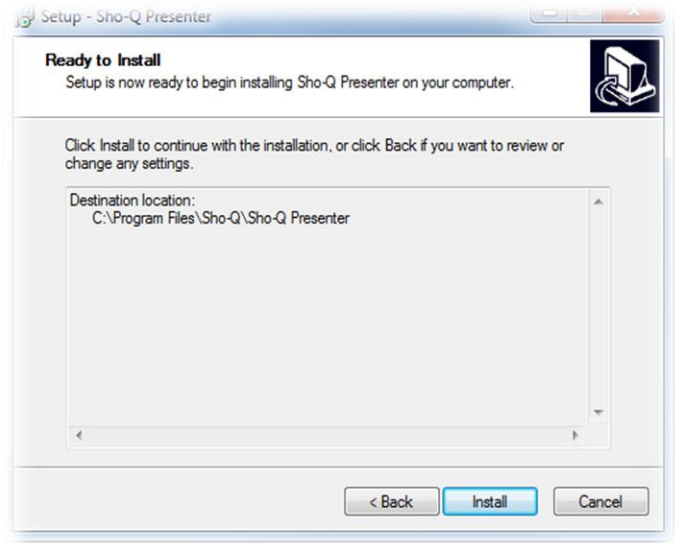
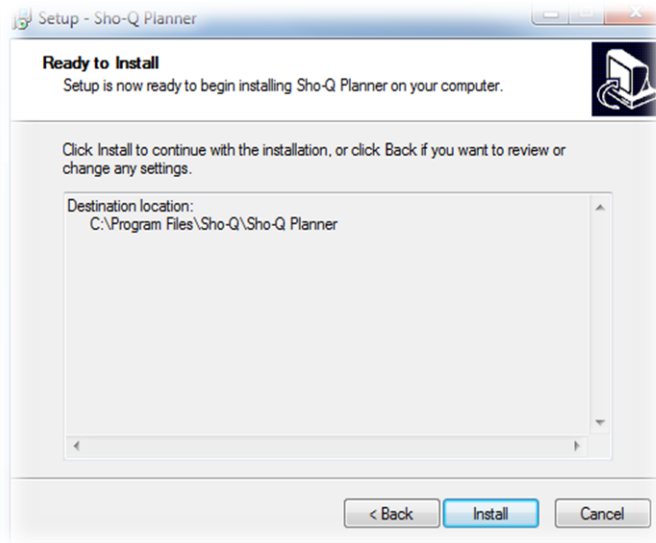
2. Selecting a destination folder

After accepting the license agreement a window will appear in which the user will be prompted to select a destination folder for the component.



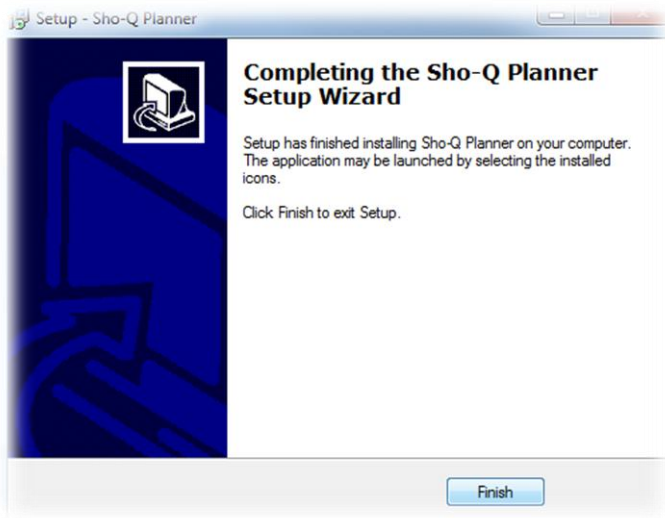
3. Installing

After selecting the destination folder and clicking “Next”, the installation will appear.



4. Finish Installation

After the installation is complete, the user will terminate the Setup Wizard by selecting the “Finish” button.



5. Creating a shortcut

The user can create a shortcut of the program should it be desired.

Setting up

In order to set up the ILS21HL properly the following steps have to be taken, which will minimize the chance of problems occurring during the procedure. The assembly process should be performed by at least 2 people.

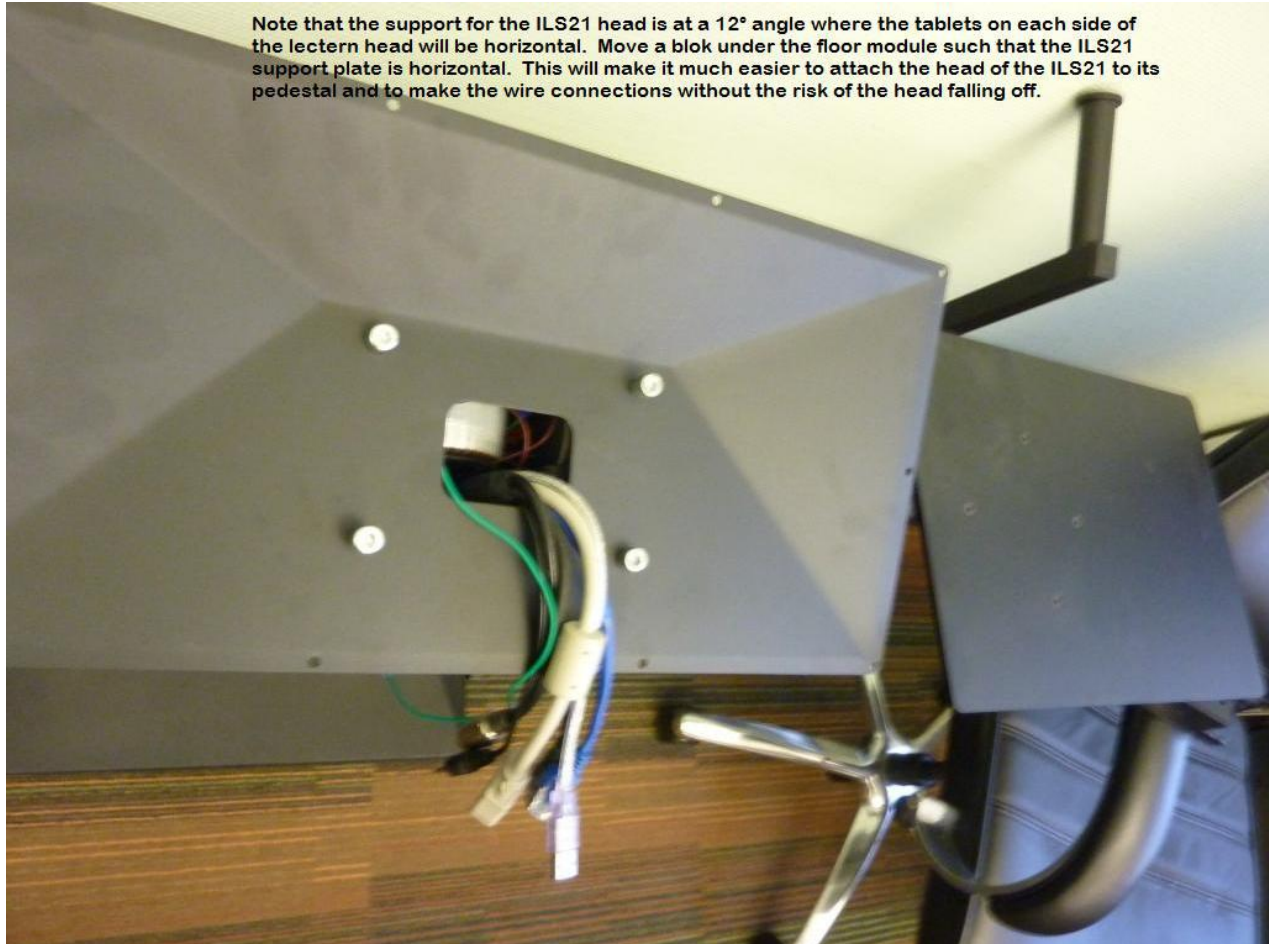
Step 1:

First the side tables have to be fixed to the stand. While tightening them, it has to be made sure that they are horizontal. Then the ILS base plate has to be mounted. All the cables have to be pulled through the cable hole. Then the plate with the tablet's center piece and the cable guide plate have to be mounted onto the pillar.



Step 2:

The support of ILS21 is at angle of 12°, while the tables on each side are horizontal. For placing the head and making the wire connections, it will be easier to put a block under the stand. This will make the table for the ILS21 head horizontal and will prevent the lectern itself to fall over during the set up of the wiring.



Step 3:

To fix the table for the ILS21 PC on the stand, 4 M8 bolts are provided. The bolts have to be tightened firmly. For this it is suggested to not only use an electrical screwdriver, but also a manual hex key.



Step 4:

Now the ILS21H head needs to be placed and connections made. First notice in the connections bay of the system where the cables go and verify that all cables are of appropriate length. Carefully place the unit on the support plate so that it exactly fits. Now take 2 ea M4 screws and screw these into the audience side corners loosely. This should allow lifting the presenter side about 10 cm to reach inside for the cabling. IF too tight than use longer screws. Place a block under the presenter side of the unit to allow making the cable connections easily. Plug the cables in the sockets at the back of the PC. Make the power and microphone connections first. Then connect the electrical height via the Phoenix plug. The next step is making the VGA connection. Make sure the screws of the VGA plug are tightened.. As a last step, the other LAN, USB and audio plugs can be connected. Now remove the block and insert all screws in the support plate and tighten them carefully.



Step 5:

Plug the cables into the floor box or make the connections from under the pedestal. Now fire up the systems to see if all functions work.... Enjoy the use of the ILS21 Intelligent Presenter Lectern!

Reference manual

In this manual the user can find useful sources

For more information about ILS lectern systems, you can visit the following website:

<http://intelligentlecterns.com/index.html>

The Sho-Q7 evaluation software can be downloaded from:

http://intelligentlecterns.com/ils_main/shogaero.html

ILS21ILS21HLWindows 7 Drivers are available on the following link:

<http://intelligentlecterns.com/lecterns/ils21/ils21.html> - On the same page, other documents devoted to ILS21ILS21HLcan be found also.

Overview of the Sho-Q functions can be found on:

<http://intelligentlecterns.com/flash/shoq.html> - The application requires flash.