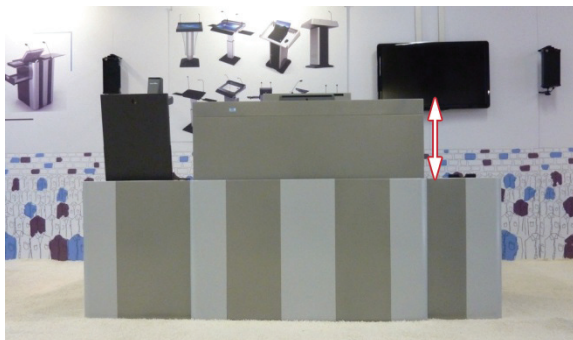


## ILS3 series Teacher Desk

The ILS3 Teacher Desk system is totally modular and has flexible width arrangements. It caters to the demands of teachers and lecturers around the globe that teach with electronic means while seated and standing up.



The height range of the ILS3-22 central desk is between 74 and 116 cm. This gives the teacher the freedom to either stand or sit down at their convenience, while having all the built tools at his/her fingertips.





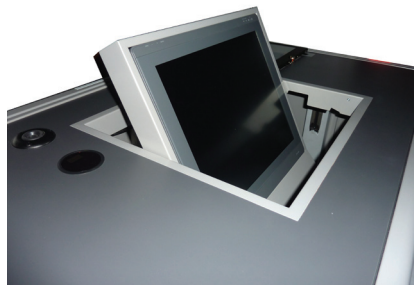
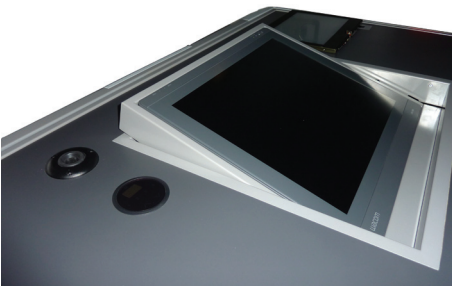
The central desk of the entry point ILS3-12F comes without the height adjustment option. The desk allows for placement of a tower PC on the left and vertical placement of 4 Rack units on the right. This maximizes the knee-space below the desk (a comfortable almost 80 cm).

The opening of the reversible monitor and on/off switch are by key lock.

Other configurations feature electronics access control by RFID module, and a touch button strip to control the locks and height settings.

## The ILS3 series central desk surface is adaptable to user needs.

Users can choose from 3 monitor attachment packages. When the monitor is not in use, it is rotated upside down and locked. The surface of the desk is flush across the desk. When in use, the monitor is rotated to a comfortable slanted position for interactive pen use. The monitor can also be rotated and locked to any other viewing angle.



The 3 mounting packages allow for monitors up to 19" (4:3), 19" (widescreen) or 24" monitors, covering the likes of WACOM 2200 and SMART SP518 and SP525.

On request dual monitor installation is possible, to write across 2 monitor surfaces and project on 2 projectors.

## Control system

Choose from popular brands or opt for the default ILS 7" panel, button panel or docking station with controller/scaler switcher to be integrated. The standard electronics touch panel comes with microphone, lighting, up/down and unlocking controls.

## Optional expansion cabinets



The ILS3 series offer 2 cabinet options, A 40 or 60 cm wide cabinet on the left, with room for a tower PC and pull-out 19" rack behind a locked door and a lockable drawer. On the right there is an option to add a 19" rack cabinet with Lexan glass door, or a smaller 19" rack with a lift box for a document camera on top. This is ideal for using e.g. a Wolfvision 9plus, it sinks into the cabinet and closes with a lockable surface. When it's in the up position, the camera surface is flush with the table, the cover stays vertical to shield the audience from the light. In the top there is a cable nook to pull out cables for e.g. notebook or visualizer use. The 19" rack is on wheels and slides out totally from the cabinet for easy maintenance.



For audio there are microphone options using the Beyerdynamic MPR210 flat wide angle microphone to move freely along the width of the desk, a gooseneck, or an IR-based wireless sound field systems from Lightspeed technologies.



the compact new ILS16

Due to the mix of cabinet placements, the ILS3 series Teacher Desks allow width of the total table to vary from 120 to 160, 180, 220 and 240cm.

Consequently we dubbed the nomenclature of the Teacher Desk family as ILS3-12, ILS3-16, ILS3-18, ILS3-22 and ILS3-24.

Cabinets can be added at a later stage when expansion is needed. The new ILS16 and the ILS24 Intelligent lecterns fit right with the new range.



This makes the ILS3 family of Teacher Desks perfect for universities requiring a large number of the same style and functionality desks and lecterns tuned to the needs in the various classrooms, labs or lecture halls with larger or smaller space requirements and fewer or more integrated functions.

The ILS Teacher Desks are produced in the Netherlands.