

**INTELLIGENT LECTERN SYSTEMS
WHEN QUALITY AND STYLE MATTER**



SYNERGY SERIES LECTERNS

COMING SPRING 2015



ILS SYNERGY SERIES LECTERNS

ILS proudly presents the all new Synergy series Lecterns, featuring Aptitude Adaptor inserts in the Synergy series exclusive Universal Mounting System.

Staying with the ILS focus on elegant, beautiful and functional lecterns, the new Synergy series combines design with a flexible platform which can be tailored to suit any venue.

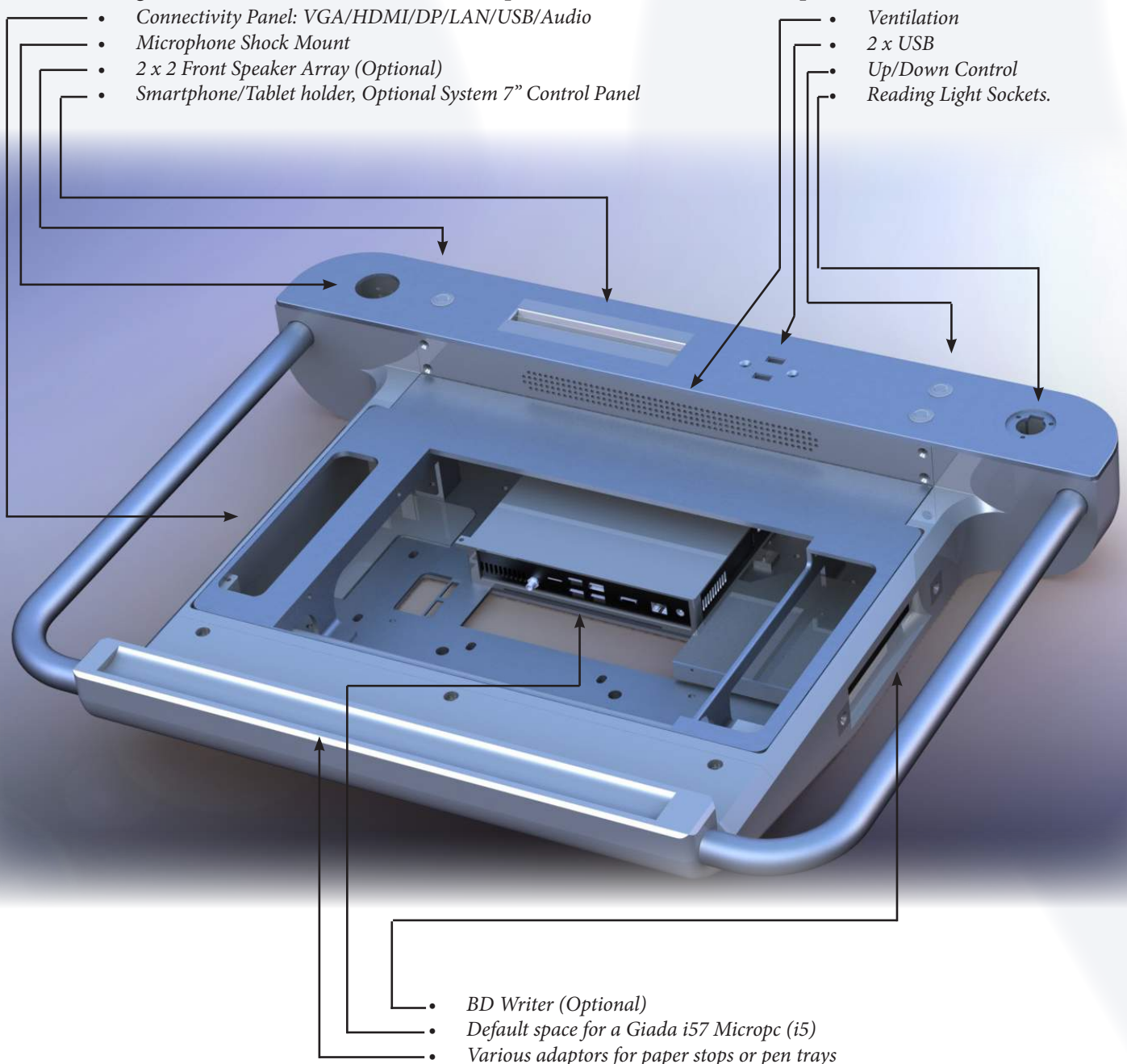
From sleek and simple options like aluminium or plexiglass to luxurious Walnut/Wenge wood, the lectern can be customized for your specific needs. However, the new Synergy-Universal Mounting System allows you to change your wooden workspace to a fully interactive screen in minutes.

With standard mounting options for;

- VESA mountable touch screens,
- integrated solutions with either aluminium or full multitouch glass worksurface or,
- all-in-one PC's from Dell, HP or Lenovo.

The new ILS Synergy Lecterns Series will allow you stay sleek and elegant without sacrificing functionality or dependability.

The following features are standard with the exception of features marked as optional.



The new Synergy Platform has been redesigned from the ground up to be a fully integrated but modular system with space for many different options and solutions.

With the Synergy Series lecterns we are also introducing the Universal Mounting System. This system will give users the choice between various inserts and the ability to change them at will. This will allow any user to change the lectern from a wooden or aluminium worksurface into an integrated system with a touch or pen based monitor in minutes. The UMS comes with space for a GIADA i57 MicroPC (i5). To lock and unlock the UMS, a special Power Key is needed to release the clamping system holding the UMS securely in place.



Synergy allows for construction with the handrail visible or hidden inside the constructions. This way the maximum amount of space can be used for either workspace or wide screen solutions. The supporting metal construction will give maximum strength while maintaining an elegant look and feel.

Optional there is space for an Audio Upgrade. This package includes a pair of high fidelity speaker arrays from VoicePoint, Germany that will give the lectern enough amplification for room up to 100 people.



Synergy series lecterns come standard with a connectivity panel on the side for laptops using VGA/HDMI/DP/LAN/USB/Audio connectors. There is also an accessport for the Power Key to unlock the UMS.

The new Synergy series lecterns can fit a wide variety of pillars and cabinets from small to wide. Pillars exist in both stationary as electrical heightadjustable versions. Cabinets have space from 1/3 to full 19" rack space, offering angle and electrical height adjustability depending on the version.

SYNERGY QT



The new Synergy QT featuring a integrated FHD IPS Touch Monitor.
With internal full PC board and standard laptop connectivity including HDMI switcher
This all in one solution uses the full width of the Synergy Lectern and has space for both a 7" Control Panel
in the top as well as a 10" Control Panel on the side of the worksurface.



*Optional:
Keyboard
Touch pad
7" Control Panel in Top
10" Control panel
Integrated Audio*



SYNERGY IM



The new Synergy IM uses the same multitouch glass technology as our previous generation ILS 22. This seamless sheet of 6 mm safety glass offers 10 point multitouch with integrated 22" FHD screen, a 10" control panel, a trackpad and a multifunctional keyboard with changing key layouts. The new Synergy IM uses Windows 10 to provide a seamless integration between the main screen and the control panel on the right. The keyboard will be fully customizable using our ILS Control Software capable of displaying virtually any keyboard layout. The Synergy IM comes standard with a 10" control panel, BD writer, i5 processor, SSD and HDMI Switcher.

Options: Audio Upgrade



SYNERGY DT



The new Synergy DT uses the same Universal Mounting System techniques that make the Synergy series lecterns so versatile. The Synergy DT has been specially designed to hold a Dell 7000 Series all in one PC giving a 21,5 inch FHD screen on a height and angle adjustable arm for great flexibility.

Alternatives include:

Lenovo A740

HP Envy Recline

Options:

Audio Upgrade

7" Control Panel in Top



SYNERGY ST



The new Synergy ST uses a Universal Mounting System with a VESA mount on top that allows for the use of a SMART SP254. This pen and touch monitor creates a very versatile lectern for both presentation and annotations. The Synergy ST requires a PC to control the screen, this PC can be placed remotely, either through a wall or floorbox, or inside the base. Alternatively, there is space inside the UMS for a Giada i57 micropc (i5).

Alternatives include:
ILS2200DualTech.
WACOM 2241 or 2242
Creston V24

Options:
Audio system
Build-in PC
7" Control Panel in Top



SYNERGY WT



The new Synergy WT is an elegant lectern with a Walnut or Wenge wood top which integrates nicely in any room. Preferred option for this lectern is the Audio Upgrade which will add a speaker array in the front, making the lectern a fully self-supporting speaking system for rooms up to 100 persons. There is also ample space inside the lectern to house additional control systems by creating space inside the wooden surface.

Options:

7" Control Panel in Top

Audio Upgrade

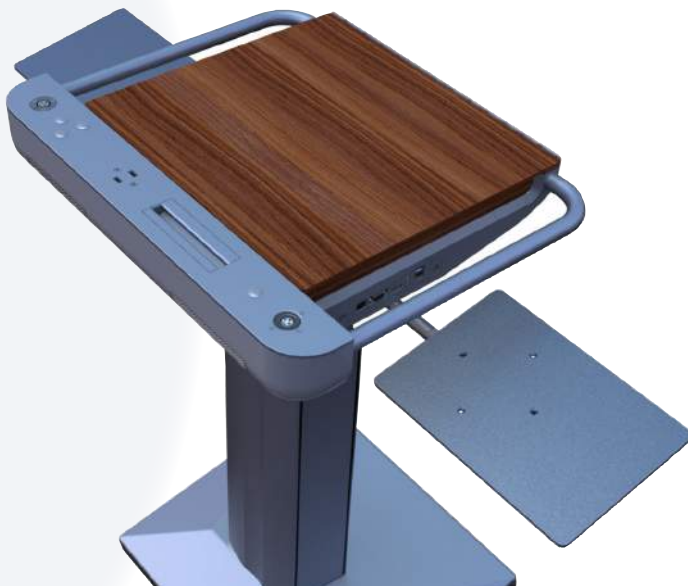


SYNERGY HT



The new Synergy HT combined the look and feel of the Synergy Series with a rich wooden workspace. Like the Synergy WT this lectern is ideal when combined with the Audio Upgrade and there is also ample space inside the wooden workspace for additional modifications.

Options:
7" Control Panel
Audio Upgrade



SYNERGY AT

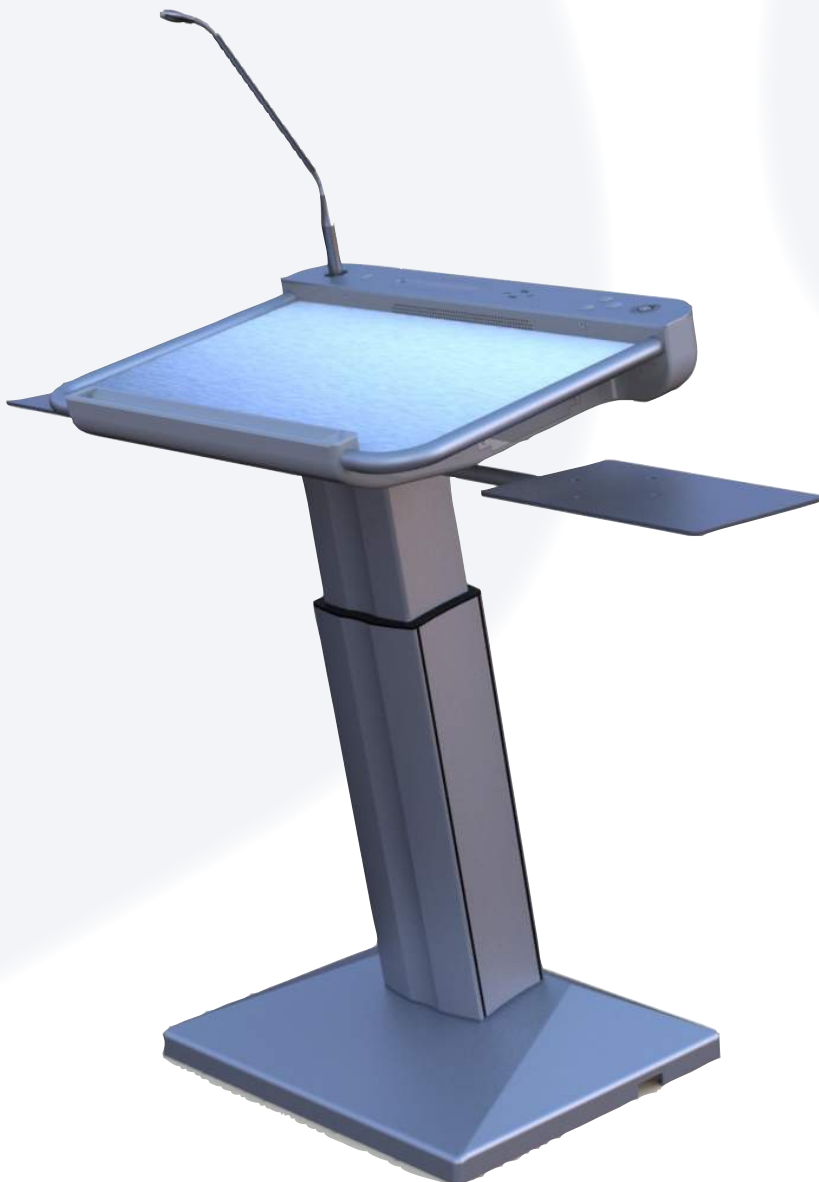
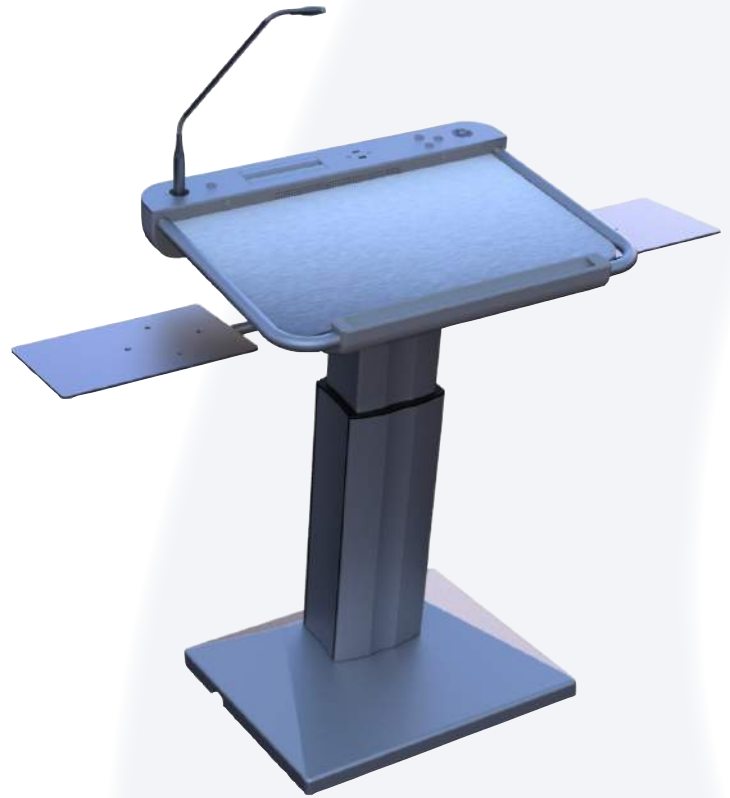
The new Synergy AT series lecterns combine flexibility with a sleek appearance. The brushed aluminium worksurface gives the lectern a modern industrial look while maintaining highly flexible with a build in VESA mount.

Of course the Universal Mounting System is also available giving anyone the option to exchange the aluminium worksurface with any other Synergy layout in minutes.

Options:

7" Control Panel

Audio Upgrade



DESIGN NOTES

Please use this space for your notes,
drawings, sketches or questions.

COLOFON

For more information about
the new Synergy Series Lecterns
by Intelligent Lectern Systems
please see our website at: www.intelligentlecterns.com
or send us your question or comments at: info@intelligentlecterns.com

